

Inmechco[®]
Since 1999



Save Earth From Spill



CATALOGUE 2025



COMPANY PROFILE

Inmechco Resources (M) Sdn. Bhd. Was established in 1999 as a leading supplier of world's best Environmental, Health & Safety and safety solutions. Reinforced by an excellent team of dedicated personnel with over 10 years of experience in the related field.

At Inmechco, we worked in alliance with client and end users to implement first class industrial expertise together with optimized worldwide logistics. Therefore, enhancing us to anticipate with emerging needs in sectors such as manufacturing, oil & gas industries, marine, oil & gas, constructions, public, telecommunications, infrastructures, etc. We strike to fulfill all the demanding aspects of industrialized requirements for the respective sectors, hence achieving superior product and service qualities.

Synergies are continuously being developed to improve and enhance the team's capacity to provide effective and efficient solutions through initiating innovative equipment and value-added services. Thus, transforming Inmechco to be a one-stop hub for all industrial and safety solutions.

CORPORATED STRATEGIES & VISION

- Developing a customer focused organization
- Establishing a positive and reliable bond of trust with our customers
- Achieving to fully understand customers' manufacturing functions
- Constructing a supportive internal organization
- Developing an effective network of worldwide suppliers to complement the current and future needs of our customers

TOTAL SAFETY PRODUCTS:

- Spill Controls & Secondary containment Pallet
- Drum Handling & Decanting Equipment
- Portable Quick Bunding
- Drain Cover, Barriers & Conical Plugs
- Rubung Bunding Solution
- Industrial, Marine (SOPEP) and Laboratory & Medical Spill Response Kit
- Oil-Only, General Purpose & Chemical Absorbent
- Oil Spill Dispersant
- SpillFix General Purpose Organic Absorbent
- Mineral Sponge Granular Absorbent
- Emergency Response Safety Shower & Eyewash Equipment and Accessories
- Decontamination Showers
- Self Contained Gravity Fed Eyewash
- ANTBAC Water Preservative Concentrate
- TOBIN Eyewash System

- Flammable, Corrosive & Combustibles Safety Cabinet
- Polypropylene (White) & Polyethylene (Blue) Corrosive & Acid Cabinets
- Safety Cans & Containers
- Smoking Receptacles
- Drum Funnels & Equipment





ROMOLD LTD®
SUPERIOR SECONDARY CONTAINMENT SOLUTIONS

**SPILL CONTAINMENT PALLET/ DECK
DRUM HANDLING & DECANTING EQUIPMENT
DRIP & STORAGE TRAY
STORAGE CABINETS & CONTAINER
MAINTENANCE CARTS
PORTABLE QUICK BUND**

SPILL DECKS & FLOOR BUNDS

Spill Deck is built tough and comes in three sizes. These Spill Decks can be configured to create non-slip bunded liquid handling workstations and storage areas to fit your working environment. Two sizes of ramps are available to make loading the Spill Deck with pallet jacks and hand trolleys easy.



1-DRUM SPILL DECK [1DW-YE]

- Ideal for small decanting or liquid collection area
- Low profile for ease of loading
- Can hold up to 10 x 25 Liters containers
- Seamless design for maximum sump security
- Can be fitted with drain plugs if required
- Polyethylene construction for maximum durability
- DIBt Z-40.22-398 Approval

Length (mm)	Width (mm)	Height (mm)	Weight (Kg)	Sump (Liters)	Max. Load (Kg)
920	720	175	15	100	300

2-DRUM SPILL DECK [2DW-YE]

- Ideal for small decanting or waste oil collection point
- Low profile for ease of loading
- Seamless design for maximum sump security
- Can be fitted with drain plugs if required
- Polyethylene construction for maximum durability
- Removable non-slip grate make cleaning easy
- DIBt Z-40.22-398 Approval

Length (mm)	Width (mm)	Height (mm)	Weight (Kg)	Sump (Liters)	Max. Load (Kg)
1260	860	150	20	130	1000



4-DRUM SPILL DECK [4DW-YE]

- Designed to hold 4 x 205 Liter drums
- Huge 300L sump complies with EPA requirements
- Seamless design for maximum sump security
- Can be fitted with drain plugs if required
- Polyethylene construction for maximum durability
- DIBt Z-40.22-398 Approval

Length (mm)	Width (mm)	Height (mm)	Weight (Kg)	Sump (Liters)	Max. Load (Kg)
1660	1260	150	38	300	2000

SPILL DECKS & FLOOR BUNDS

4-DRUM IN-LINE SPILL DECK [4DWI-YE]



- Designed to hold 4 x 205 Liter drums
- Huge 300L sump complies with EPA requirements
- Seamless design for maximum sump security
- Can be fitted with drain plugs if required
- Polyethylene construction for maximum durability
- DIBt Z-40.22-398 Approval

Length (mm)	Width (mm)	Height (mm)	Weight (Kg)	Sump (Liters)	Max. Load (Kg)
2610	895	150	42	300	2000

4-DRUM FLOOR TRAY [4DFT-YE]

- Design to hold 4 x 205 Liters drums
- Low profile 150mm and has additional bracing built into the base to create a rigid platform for the rotationally molded grid mesh deck
- Polyethylene construction for maximum durability
- Removable non-slip grate make cleaning easy

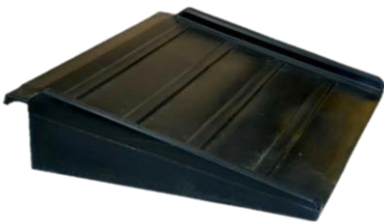
Length (mm)	Width (mm)	Height (mm)	Weight (Kg)	Sump (Liters)	Max. Load (Kg)
1260	860	150	20	130	1000



COMPACT SPILL DECK RAMP [BFR]

- Ideal for confined areas requiring ramp access
- Ramp attaches to spill deck for extra stability
- Tough single piece molded polyethylene

Length (mm)	Width (mm)	Height (mm)	Weight (Kg)	Max. Load (Kg)
650	800	160	8	1000



LARGE SPILL DECK RAMP [BFR2]

- Gentle incline for heavier loads
- Suitable for hand trolley and pallet jack
- Raised molded grips to reduce slippage
- Tough polyethylene construction for maximum strength

Length (mm)	Width (mm)	Height (mm)	Weight (Kg)	Max. Load (Kg)
1740	1000	160	28	1000



1200L SUMP FLOOR KIT – RECTANGLE [BF4KIT1]



- Provides a 3320mm x 2520mm fully contained 4-section rectangular low profile (150mm) storage/ bunded work area and comes complete with sump connectors (holes are pre-drilled) and joining strips
- Once assembly you have a storage/ bunded work area that can accommodate up to 4 x 1000 liter standard IBCs making this a very practical and cost-effective storage/ bunded workspace solution
- Total sump capacity is 1200 liters

External Size/ Section (L x W x H)	1660 x 1260 x 150
Assembled Size	3320 x 2520 x 150
No Of Containers	Up to 4 x 1000 Liter IBC
Sump Capacity	300 Liters/ Section & 1200 Liters/ Kit
Color	Yellow
Tare Weight	38Kg/ Section
Max. Load (UDL)	2000Kg/ Section
Approval	DiBt Z-40.22-398

1200L SUMP FLOOR KIT – INLINE [BF4KIT2]

- BF4KIT2 provides a 5040mm x 1660mm fully contained 4 in a line low profile (150mm) storage/ bunded work area and comes complete with sump connectors (holes are pre-drilled) and joining strips
- Once assembly you have a storage/ bunded work area that can accommodate up to 4 x 1000 liter standard IBCs making this a very practical and cost-effective storage/ bunded workspace solution
- Total sump capacity is 1200 liters

External Size/ Section (L x W x H)	1660 x 1260 x 150
Assembled Size	5040 x 1660 x 150
No Of Containers	Up to 4 x 1000 Liter IBC
Sump Capacity	300 Liters/ Section & 1200 Liters/ Kit
Color	Yellow
Tare Weight	38Kg/ Section
Max. Load (UDL)	2000Kg/ Section
Approval	DiBt Z-40.22-398



SPILL DECKS & FLOOR BUNDS - ACCESSORIES

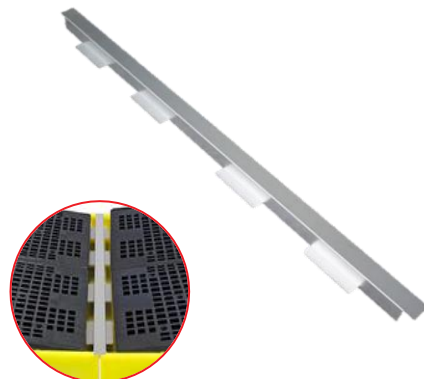


JOINING STRIP FOR 2DW-YE [BFS2]

- This metal joining strip is purchased in multiples of 1.26 meter lengths and is used to cover the gap created when 2 or more poly sump floors are joined together.
- It is advised that you discuss your requirements with us prior to ordering.
- 1260mm x 62mm (WINGS 135mm) x 50mm

JOINING STRIP FOR 4DW-YE [BFS4]

- This metal joining strip is purchased in multiples of 1.66 meter lengths and is used to cover the gap created when 2 or more poly sump floors are joined together.
- It is advised that you discuss your requirements with us prior to ordering.
- 1660mm x 62mm (WINGS 135mm) x 50mm



1" BSP CONNECTOR SUMP CONNECTOR FOR FLOOR BUND/ SPILL DECK RANGE [BFC4]



- This threaded connectors enable you to join the sumps of poly sump flooring together and allow any split liquid to flow from one sump to another.
- It is advised that you discuss your requirements with us prior to ordering.
- 79mm x 40mm & 1" BSP Connector

SPUN WELD DRAIN OUTLET AND PLUG 3/4" BSP FEMALE [SWDP]

- Spund Welded to Any Yellow Bund for drainage of spills for all Yellow Secondary Containment Pallets, IBC Bunds, Spill Decks/ Floor Bund and Trays



STORAGE TRAY



DRUM TRAY [T-YE]

- Tough and durable drum drip tray ideal for standing a 205 Liter drum in to catch drips and spills caused during filling or dispensing.
- It is also suitable for storing lead acid batteries and has 50 liters capacity

Diameter mm	Height (mm)	Weight (Kg)	Sump Capacity (L)	Shape
Ø870	190	5	50	Round

TUFF STORAGE TRAYS [ST110-YE] & [ST230-YE]

- Provides safe, bundled storage for small drums and containers.
- Ideal for use with batteries, drums, machine parts & etc.
- Ribbed base design provides additional strength and spill clearance
- Chemical resistant rotomolded polyethylene for superior durability

P/N	Length (mm)	Width (mm)	Height (mm)	Weight (Kg)	Sump Capacity (L)	Max. Load - UDL (Kg)
ST110-YE	730	730	295	6.5	110	250
ST230-YE	1290	730	295	10	230	600



ST110-YE



ST230-YE

SPILL TRAYS

DRIP AND STORAGE TRAYS

- Designed for bench top use.
- Perfect for lab applications
- Spills drain safely to the sump
- Chemical resistance polyethylene

P/N	Capacity (Liters)	Length (mm)	Width (mm)	Height (mm)	Weight (Kg)
ST11-5-BK	11.5	790	400	50	1.2
ST15-BK	15	1000	400	50	1
ST16-BK	16	530	400	100	0.75
ST25-BK	25	1100	550	50	3
ST28-BK	28	645	490	120	1.3
ST45-YE	45	630	590	175	3
ST64-BK	64	800	800	120	2.6
ST65-BK	65	1000	550	150	2
ST100-BK	100	1000	1000	120	4
ST144-BK	144	1200	1200	120	5.5



SPILL TRAYS WITH GRATE

- Made from polyethylene for extra strength and chemical resistance.
- With removable grate to keep your containers above the spill and allow easy cleaning.
- Available in a range of size from 20 to 100 liters.
- Perfect for storage of carboy up to 25 liter.

Item Code	Capacity (Liters)	Length (mm)	Width (mm)	Height (mm)	UDL (Kg)	Weight (Kg)
STG-20-YE	20	595	395	175	55	4
STG-30-YE	30	805	405	170	55	5
STG-40-YE	40	800	605	170	105	7.5
STG60-YE	60	1000	605	200	205	10
STG70-YE	70	804	608	315	150	9.5
STG100-YE	100	1195	795	185	205	14

4-WAY SPILL CONTAINMENT PALLETS



4-WAY 2-DRUM SPILL PALLET [4W2D-YE-D]

- Designed for safe and compliant storage of 2 x 205 Liter drums
- Made from 100% corrosion free polyethylene
- 4-Way forklift access for loaded spill pallets
- EPA compliant sump capacity
- Broadband chemical resistance including acid and bases
- DIBt Z-40.22-398 Approval

Length (mm)	Width (mm)	Height (mm)	Weight (Kg)	Sump (Liters)	Max. Load (Kg)
1220	820	450	27	230	1200

4-WAY 4-DRUM SPILL PALLET [4W4D-YE-D]

- Designed for safe and compliant storage of 4 x 205 Liter drums
- Made from 100% corrosion free polyethylene
- 4-Way forklift access for loaded spill pallets
- EPA compliant sumps in all spill pallets
- Broadband chemical resistance including acid and bases
- DIBt Z-40.22-398 Approval

Length (mm)	Width (mm)	Height (mm)	Weight (Kg)	Sump (Liters)	Max. Load (Kg)
1220	1220	390	40	250	1500



4-WAY IBC SPILL CONTAINMENT PALLETS



4-WAY SINGLE IBC SPILL CONTAINMENT PALLET [IBC18-YE-D]

- Designed to hold 1 x 1000 Liters IBC Tank
- Hughes 1150 Liter sump complies with EPA requirements
- Tough polyethylene construction for maximum durability and broadband chemical resistance including acid and bases
- 4-Way forklift access for loaded spill pallets
- Seamless design for maximum sump security
- DIBt Z-40.22-398 Approval

Length (mm)	Width (mm)	Height (mm)	Weight (Kg)	Sump (Liters)	Max. Load (Kg)
1340	1230	1090	71	1150	1500

4-WAY DOUBLE IBC SPILL CONTAINMENT PALLET [4WIBC2-YE-D]

- Designed to hold 2 x 1000 Liters IBC Tank/ 8 x 205 Liter drums
- Hughes 1150 Liter sump exceeds EPA requirements
- Robust and chemically resistant polyethylene construction
- 4-Way forklift access for loaded spill pallets
- Seamless design for maximum sump security
- DIBt Z-40.22-398 Approval

Length (mm)	Width (mm)	Height (mm)	Weight (Kg)	Sump (Liters)	Max. Load (Kg)
2340	1225	610	91	1150	2500



SPILL CONTAINMENT PALLETS



1-DRUM SPILL PALLET [1D-YE-D]

- Designed for 1 x 205 Liter drum
- Made from 100% corrosion free polyethylene
- EPA compliant sump capacity
- Small footprint for compliant storage in small areas
- Removable grate makes decontamination easy
- Broadband chemical resistance including acid and bases
- DIBt Z-40.22-398 Approval

Length (mm)	Width (mm)	Height (mm)	Weight (Kg)	Sump (Liters)	Max. Load (Kg)
900	700	525	22	225	300

2-DRUM SPILL PALLET [2W2D-YE-D]

- Designed for safe and compliant storage of 2 x 205 Liter drums
- Made from 100% corrosion free seamless polyethylene
- 2-Way forklift access
- EPA compliant sumps in all spill pallets
- Broadband chemical resistance including acid and bases
- DIBt Z-40.22-398 Approval

Length (mm)	Width (mm)	Height (mm)	Weight (Kg)	Sump (Liters)	Max. Load (Kg)
1220	820	330	23	240	650



3-DRUM SPILL PALLET [3D-YE-D]

- Designed for safe and compliant storage of 3 x 205 Liter drums
- Seamless construction eliminates leaks
- Meets EPA sump requirements
- Broadband chemical resistance including acids & bases
- DIBt Z-40.22-398 Approval



Length (mm)	Width (mm)	Height (mm)	Weight (Kg)	Sump (Liters)	Max. Load (Kg)
1785	780	240	30	228	900

SPILL CONTAINMENT PALLETS



2 WAY 4-DRUM SPILL PALLET [2W4D-YE-D]

- Designed for safe and compliant storage of 4 x 205 Liter drums
- Made from 100% corrosion free polyethylene
- 2-Way forklift access
- EPA compliant sumps in all spill pallets
- Broadband chemical resistance including acid and bases
- DIBt Z-40.22-398 Approval

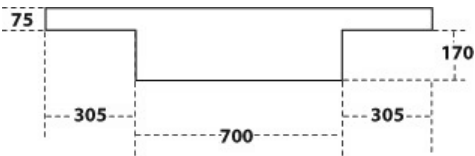
Length (mm)	Width (mm)	Height (mm)	Weight (Kg)	Sump (Liters)	Max. Load (Kg)
1280	1285	275	29	230	1250

4-DRUM RACKING SPILL PALLET [4DRS-YE-D]

- Turn standard pallet racking into bunded racking
- Prevent contamination of goods stored below
- Utilizes the “dead space” between the beams
- Designed to provide easy access to pallets
- 100% polyethylene for broadband chemical resistance.



Length (mm)	Width (mm)	Height (mm)	Weight (Kg)	Sump (Liters)	Max. Load (Kg)
1310	1310	370	44	410	1250



ROLL-TOP SPILL PALLET

2WSP-YE-D

2-DRUM ROLL-TOP SPILL PALLET WITH DRAIN

- 100% corrosion free Polyethylene.
- Hard covered bunded store.
- For 2 x 205 liter drums or smaller containers.
- Lockable shutter door.
- Integral base fork pockets.
- Delivered fully assembled.
- Drain plugs available as an optional extra.

Length (mm)	Width (mm)	Height (mm)	Weight (Kg)	Sump Capacity (L)	Max. Load - UDL (Kg)
1490	990	1690	85	230	650



4WSP-YE-D

4-DRUM ROLL-TOP SPILL PALLET WITH DRAIN

- Protect your load from weather and theft.
- Key lockable easy lift Roll Top Cover 410 liters sump.
- Suitable for holding 4 x 205L/ 44 Gallon drums.
- Removable non-slip grate.
- Raised lip helps to keep your load secure.
- Delivered fully assembled.
- Drain plugs available as an optional extra.

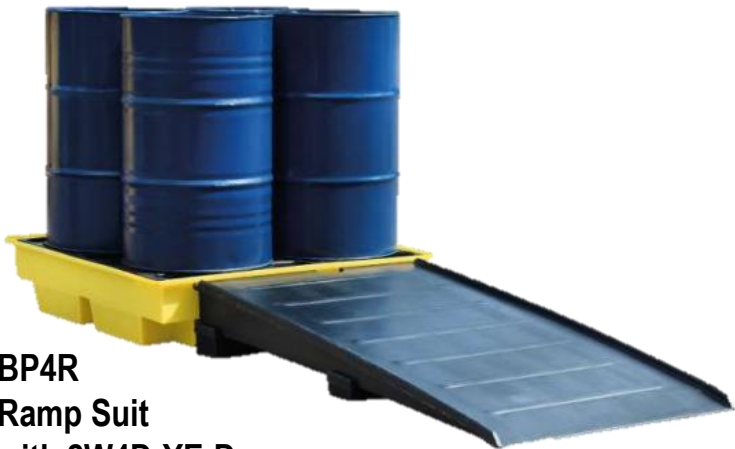
Length (mm)	Width (mm)	Height (mm)	Weight (Kg)	Sump Capacity (L)	Max. Load - UDL (Kg)
1470	1420	2070	121	410	1250

SPILL CONTAINMENT PALLETS - ACCESSORIES

SPILL PALLET RAMPS

- Made from tough polyethylene
- Suitable for hand trolley
- Raised molded grips to reduce slippage

RAMP P/N	Suit to	Length (mm)	Width (mm)	Height (mm)	Weight (Kg)	Max. Load (Kg)
BP4R [BFR3]	2W4D-YE-D	1740	1000	275	33	1000
BP4RTR [BFR5]	4WSP-YE-D	1740	1000	370	38	1000
BP4RFW [BFR4]	2WSP-YE-D	1740	1000	390	36	1000



BP4R
Ramp Suit
with 2W4D-YE-D



BP4RTR
Ramp Suit with
4WSP-YE-D



BP4RFW
Ramp Suit
with 2WSP-YE-D

IBC SPILL CONTAINMENT PALLETS



SINGLE IBC SPILL CONTAINMENT PALLET [IBC-YE-D]

- Designed to hold 1 x 1000 Liters IBC Tank
- Hughes 1100 Liter sump complies with EPA requirements
- Tough polyethylene construction for maximum durability
- 2-Way forklift access for loaded IBC
- Seamless design for maximum sump security
- DIBt Z-40.22-398 Approval

Length (mm)	Width (mm)	Height (mm)	Weight (Kg)	Sump (Liters)	Max. Load (Kg)
1760	1350	710	91	1100	2000

DOUBLE IBC SPILL CONTAINMENT PALLET [IBC2-YE-D]

- Designed to hold 2 x 1000 Liters IBC Tank/ 8 x 205 Liter drums
- Hughes 1140 Liter sump exceeds EPA requirements
- Robust and chemically resistant polyethylene construction

Length (mm)	Width (mm)	Height (mm)	Weight (Kg)	Sump (Liters)	Max. Load (Kg)
2550	1360	565	116	1140	3000



IBC SPILL CONTAINMENT PALLET - ACCESSORIES



DISPENSING WELLS FOR SINGLE IBC STORAGE UNIT [IBC-1ST]

- Attaches securely to any position around the bund
- Catches drips & directs any overflow back into the sump
- Big enough to hold 25 liters drum for safe decanting
- Ideally suited for storing connected hoses when not in use
- Suit to Single IBC Spill Containment Pallet [IBC-YE-D]

Length (mm)	Width (mm)	Height (mm)	Weight (Kg)	Sump Capacity (L)	Suit to Model
525	545	855	8.5	86	IBC-YE-D

DISPENSING WELLS FOR DOUBLE IBC STORAGE UNIT [IBC-2ST]

- Attaches securely to any position around the bund
- Catches drips & directs any overflow back into the sump
- Big enough to hold 25 liters drum for safe decanting
- Ideally suited for storing connected hoses when not in use
- Suit to Single IBC Spill Containment Pallet [IBC2-YE-D]

Length (mm)	Width (mm)	Height (mm)	Weight (Kg)	Sump Capacity (L)	Suit to Model
530	520	520	5	86	IBC2-YE-D



IBC FUNNEL WITH [IBC-FL-YE]

- Large diameter for easy decanting into IBCs
- Avoid spills and keep the area free of slip hazards
- Thought polyethylene construction for maximum durability

Diameter (mm)	Height (mm)	Weight (Kg)
640	150	4

IBC SPILL PALLET

SINGLE IBC HARD COVER SPILL CONTAINMENT BUND [IBC-WSP-YE-D]

- Base of IBC Spill Containment make from medium-density polyethylene and designed to hold 1 x 1000 Liter IBC tank.
- Has a 0.6mm thickness galvanized steel with powder coated paint finishing cover fitted with hinged doors and retaining catches to hold them open during loading and unloading.
- The metal cover is secured to the spill pallet by means of M8 done head Allen bolts and nylon nuts.
- Door Aperture: 1590(H) x 1165(W)mm



Length (mm)	Width (mm)	Height (mm)	Weight (Kg)	Sump Capacity (L)	Max. Load - UDL (Kg)
1840	1425	2405	223	1100	2000

DUAL IBC HARD COVER SPILL CONTAINMENT BUND [IBC2-WSP-YE-D]

- Base of IBC Spill Containment make from medium-density polyethylene and designed to hold 2 x 1000 Liter IBC tank/ 8 x 205 Liter drums.
- Has a 0.6mm thickness galvanized steel with powder coated paint finishing cover with access via 2 steel sliding doors (fitted with a central lock).
- The galvanized steel cover is attached to the spill pallet by means of M8 done head Allen bolts and nylon nuts.
- Door Aperture: 1490(H) x 2365 (W)mm



Length (mm)	Width (mm)	Height (mm)	Weight (Kg)	Sump Capacity (L)	Max. Load - UDL (Kg)
2625	1430	2110	285	1140	3000

DRUM HANDLING & ACCESSORIES



POLY DRUM FUNNEL [DF1-YE]

- Perfect solution for waste oil collection point
- Large stable surface area allows for controlled pouring
- Drain containers and oil filters before disposal
- Tough polyethylene construction for maximum durability

Diameter (mm)	Height (mm)	Weight (Kg)
Ø610	230	4

DRUM TOPPER [DT-YE]

- Prevent corrosion of drums stored outside
- Locks onto the drum but is easily removed when required
- Slanted lid prevents buildup of rainwater
- Made of UV stabilized polyethylene

Diameter (mm)	Height (mm)	Weight (Kg)
Ø630	160	2



POLY DRUM DOLLY [MDD-H]

- Ideal for mobile fluid collection and vertical dispensing
- Avoid spills by taking your drum to the job
- Collect incidental spills and prevent slip hazard
- Overall sump height 255mm for easy of loading
- Sturdy handle and rotating lockable castors

Length (mm)	Width (mm)	Height (mm)	Weight (Kg)	Sump (Liters)	Max. Load (Kg)
725	725	990	15.5	30	300

DRUM HANDLING & DECANTING EQUIPMENT



MOBILE DISPENSING STATION [MD230-YE-D]

- Safely move 205 Liter drum from vertical to horizontal
- Genuine single person operation. No forklift required
- Lockable 3rd wheel for easy maneuvering
- Single piece molded polyethylene with 230 liter sump
- Double ratchet straps for extra load security
- DiBt Z-40.22-398 APPROVAL.

POLY RACKERS

- Decant from 205 liter drums in a safe bunded area
- Huge 400 liter sump makes recovering spilled liquids easy
- Seamless design for maximum sump security
- Racker (base unit) and Stacker (top unit) are sold separately

POLY STACKER – TOP [DBC-YE]



DBC-YE

Length (mm)	Width (mm)	Height (mm)	Weight (Kg)	Sump (Liters)	Max. Load (Kg)
1240	795	370	13	-	600

POLY RACKERS – BASE [DB4-YE-D]

Length (mm)	Width (mm)	Height (mm)	Weight (Kg)	Sump (Liters)	Max. Load (Kg)
1390	1250	490	50	400	1250



DB4-YE-D



DRUM HANDLING & DECANTING EQUIPMENT

20 GALLON UN RATE OVERPACK [R1650]



- 20 Gallon (75.7 Liter) UN rated overpack constructed from yellow blow-molded, High-density polyethylene (HDPE) with UV inhibitors.
- Durable, lightweight, weather and chemical resistant with a screw-on lid
- Ideal for safe storage, handling and transportation of hazardous materials, spill containment and cleanup of hazardous material

UN Rating	1H2/X57/S
Capacity (Gallon/ Liters)	20 Gallon/ 75.7 Liter
Inner Dimension (Top x Bottom x Height)	Ø49.3 x Ø41.6 x 50.8cm
Outer Dimension (Top x Bottom x Height)	Ø51.7 x Ø41.6 x 52.7cm
Weight	5.9Kg

30 GALLON UN RATE OVERPACK [R1601]

- 30 Gallon (113.6 Liter) UN rated overpack constructed from yellow blow-molded, High-density polyethylene (HDPE) with UV inhibitors.
- Durable, lightweight, weather and chemical resistant with a screw-on lid.
- Ideal for safe storage, handling and transportation of hazardous materials, spill containment and cleanup of hazardous material

UN Rating	1H2/X120/S, 1H2/Y180/S
Capacity (Gallon/ Liters)	30 Gallon/ 113.6 Liter
Inner Dimension (Top x Bottom x Height)	Ø50.5 x Ø41.3 x 71.8cm
Outer Dimension (Top x Bottom x Height)	Ø57.2 x 72cm
Weight	8.2Kg



65 GALLON UN RATE OVERPACK [R1661]



- 65 Gallon (246 Liter) UN rated overpack constructed from yellow blow-molded, High-density polyethylene (HDPE) with UV inhibitors.
- Durable, lightweight, weather and chemical resistant with a screw-on lid
- Ideal for safe storage, handling and transportation of hazardous materials, spill containment and cleanup of hazardous material

UN Rating	1H2/X300/S
Capacity (Gallon/ Liters)	65 Gallon/ 246 Liter
Inner Dimension (Top x Bottom x Height)	Ø68.9 x Ø65.9 x 85.8cm
Outer Dimension (Top x Bottom x Height)	Ø78.7 x 85.7cm
Weight	20.4Kg

DRUM HANDLING & DECANTING EQUIPMENT



95 GALLON UN RATE OVERPACK [R1690]

- 95 Gallon (361 Liter) UN rated overpack constructed from yellow blow-molded, High-density polyethylene (HDPE) with UV inhibitors.
- Durable, lightweight, weather and chemical resistant with a screw-on lid
- Ideal for safe storage, handling and transportation of hazardous materials, spill containment and cleanup of hazardous material

UN Rating	1H2/X300/S
Capacity (Gallon/ Liters)	95 Gallon/ 361 Liter
Inner Dimension (Top x Bottom x Height)	Ø68.9 x Ø65 x 99.1cm
Outer Dimension (Top x Bottom x Height)	Ø78.7 x 104.8cm
Weight	22.5Kg

340 LITERS OVERPACK [OP1]

- Superior strength with UV inhibitors
- Nestable for convenient storage
- Ideal weatherproof spill kit container

Capacity (Liter)	Top Diameter (mm)	Bottom Diameter (mm)	Height (mm)	Weight (Kg)
340	830	683	1020	22



MAINTENANCE CARTS & TROLLEYS



MAINTENANCE CARTS & TROLLEY [MST66-YE]

- Robust mobile drip tray fitted with 4 x 50mm swivel castors, full width handle and a removable grid.
- This unit is ideal for transporting small containers from area to area, whilst still being able to contain drips and spills.

Length (mm)	Width (mm)	Height (mm)	Weight (Kg)	Sump (Liters)	Max. Load (Kg)
933	608	938	13.5	66	120

MAINTENANCE CARTS & TROLLEY [MST100-YE]

- A compact trolley manufactured from medium density polyethylene ensures lightweight operation with the added benefit of excellent chemical resistance.
- Design to carry 4 x 25 Liter cans it can of course be used for a range of tasks, for ease of use it is fitted with rear swivel/ brake castors.
- 1000mm Height to top of handle

Length (mm)	Width (mm)	Height (mm)	Weight (Kg)	Sump (Liters)	Max. Load (Kg)
1000	700	320	15	100	100



MAINTENANCE CARTS & TROLLEY [SPC]

- Transport and dispense loose spill clean-up granules, or salt for de-icing paths etc.
- From this highly maneuverable cart which is fitted with front swivel brake castors and fixed back wheels.
- It comes complete with a disposal bag area with lid, plus brush and shovel storage points.

Length (mm)	Width (mm)	Height (mm)	Weight (Kg)	Sump (Liters)
1360	710	965	38	60

MAINTENANCE CARTS & TROLLEYS



MAINTENANCE CARTS & TROLLEY [PWC4]

- Rotationally molded from durable polyethylene this fully mobile (2 large fixed rear wheels and 2 front, swivel and lockable castors) cabinet is fitted with a lockable doors, comes complete with a height adjustable shelf and a recessed top (18 Liter capacity) which can act as a temporary spill tray if a container of liquid becomes compromised.

Length (mm)	Width (mm)	Height (mm)	Weight (Kg)	Sump Capacity – Up Tray (Liters)
640	725	1075	27	8

MAINTENANCE CARTS & TROLLEY [PMCXL4]

- For housekeeping or maintenance operations
- This robust cabinet is supplied on wheels with a roll holder and lockable cupboard.
- PMCXL4 is the largest of our lockable cabinet on wheels range.
- The unit comes complete with a roll dispenser capable of taking rolls up to Ø550mm x 520mm.

Length (mm)	Width (mm)	Height (mm)	Weight (Kg)	Capacity (Liters)
650	725	1550	37	45



STORAGE CABINETS & CONTAINERS



PLASTIC STORAGE CABINET [PSC1]

- Rotationally molded storage cabinet with a hinged lockable door and a shelf above the plastic mesh deck great storage cabinet for small cans, tins and containers with a sump capacity of 17 liter

Length (mm)	Width (mm)	Height (mm)	Weight (Kg)	Sump (Liters)	Shelf, UDL (Kg)
534	420	990	15	17	12

PLASTIC STORAGE CABINET [PSC2]

- Rotationally molded storage cabinet with a hinged lockable door and a shelf above the plastic mesh deck great storage cabinet for small cans, tins and containers with a sump capacity of 70 liter

Length (mm)	Width (mm)	Height (mm)	Weight (Kg)	Sump (Liters)	Shelf, UDL (Kg)
650	570	1650	44	70	52



PLASTIC STORAGE CABINET [PSC3]

- Rotationally molded storage cabinet with a hinged lockable door is designed to allow you to store 1 x 205 Liter drum in a vertical position and still have room to fit a small pump
- The drum sits on a plastic mesh deck above a 225 Liter sump

Length (mm)	Width (mm)	Height (mm)	Weight (Kg)	Sump (Liters)	Shelf, UDL (Kg)
920	720	1835	50	225	300

STORAGE CABINETS & CONTAINERS



PLASTIC STORAGE CABINET [PSC4]

- Rotationally molded storage cabinet with a hinged lockable door and a shelf above the plastic mesh deck great storage cabinet for small cans, tins and containers with a sump capacity of 225 Liter

Length (mm)	Width (mm)	Height (mm)	Weight (Kg)	Sump (Liters)	Shelf, UDL (Kg)
920	740	1835	60	225	52

PLASTIC STORAGE CABINET [PSC5]

- Rotationally molded storage cabinet with a hinged lockable door and a shelf above the plastic mesh deck great storage cabinet for small cans, tins and containers with a sump capacity of 100 liter

Length (mm)	Width (mm)	Height (mm)	Weight (Kg)	Sump (Liters)	Shelf, UDL (Kg)
920	740	1520	55	100	52



LARGE STORAGE CONTAINER [GPSC2]

- This static storage bin has a variety of uses from "Grit Bin" for your rock salt to a spill kit and it comes complete with push fit lid and fork pockets to aid movement.
- Come with a lid and lock for security and weather protection

Length (mm)	Width (mm)	Height (mm)	Weight (Kg)	Capacity (Liters)	Max. Load – UDL (Kg)
875	875	880	22	250	300

STORAGE CABINETS & CONTAINERS



LARGE STORAGE CONTAINER [GPSC1-YE]

- This static storage bin has a variety of uses from “Grit Bin” for your rock salt to a spill kit and it comes complete with push fit lid and fork pockets to aid movement.
- Come with a lid and lock for security and weather protection

Length (mm)	Width (mm)	Height (mm)	Weight (Kg)	Capacity (Liters)	Max. Load – UDL (Kg)
1150	1130	850	32	600	1000

LARGE STORAGE CONTAINER [GPSC2-YE]

- This static storage bin has a variety of uses from “Grit Bin” for your rock salt to a spill kit and it comes complete with push fit lid and fork pockets to aid movement.
- Come with a lid and lock for security and weather protection

Length (mm)	Width (mm)	Height (mm)	Weight (Kg)	Capacity (Liters)	Max. Load – UDL (Kg)
875	875	880	22	250	300



LARGE STORAGE CONTAINER [PSB1-YE]

- Rotationally molded from medium density UV stabilized polyethylene, 350 Liter container is suitable for use with liquids or dry powders.
- It has fork channels for easy movement and lockable lid for security.
- Optional additional wheel kit can be added for easier movement.
- Available in Yellow and Orange Color

Length (mm)	Width (mm)	Height (mm)	Weight (Kg)	Capacity (Liters)
1265	855	910	28	350

STORAGE CABINETS & CONTAINERS

LARGE STORAGE CONTAINER [PSB2-YE]



- Rotationally molded from medium density UV stabilized polyethylene, 1000 Liter container is suitable for use with liquids or dry powders.
- It has fork channels for easy movement and lockable lid for security.
- Optional additional wheel kit can be added for easier movement.
- Available in Yellow and Orange Color

Length (mm)	Width (mm)	Height (mm)	Weight (Kg)	Capacity (Liters)
1460	1010	975	38	1000

LARGE STORAGE CONTAINER [PSB3-YE]

- Rotationally molded from medium density UV stabilized polyethylene, 1400 Liter container is suitable for use with liquids or dry powders.
- It has fork channels for easy movement and lockable lid for security.
- Optional additional wheel kit can be added for easier movement.
- Available in Yellow and Orange Color

Length (mm)	Width (mm)	Height (mm)	Weight (Kg)	Capacity (Liters)
1630	1170	1125	47	1400



OPTIONAL WHEEL KIT

FOR LARGE STORAGE CONTAINER [PSB1/ PSB2/PSB3-YE]



PSB1-YE + WHEEL



PSB2-YE + WHEEL



PSB3-YE + WHEEL

PORTABLE QUICK BUND

PORTABLE QUICK BUNDING

- The Australian made Portable Quick Bunding system provides a safe and secure area for dealing with a wide range of liquids including acids, bases, oils and fuels
- Manufacturing from heavy duty HRL-36, the high-frequency welded seams ensure no leaking and provide maximum strength
- The fold down walls allow for vehicle and forklift access
- The Quick Bund can be manufactured to your specific requirements
- Lightweight and portable, the Quick Bund is deal for all field applications including drill rigs, generators, refueling and transformers
- The Quick Bund can be fitted with a portable oil/ water filter for outdoor use



ITEM CODE	Capacity (Liters)	Dimensions (Meter)	Packing Size (mm)	Weight (Kg)
PQB1	1,000	1.9 x 1.9 x 0.3	600 x 700 x100	10
PQB2	2,000	2.5 x 2.5 x 0.3	700 x 700 x 100	20
PQB3	3,000	4.1 x 2.5 x 0.3	700 x 700 x 150	26
PQB4	1,800	3.2 x 1.9 x 0.3	700 x 700 x 100	19
PQB5	3,000	3.2 x 3.2 x 0.3	700 x 700 x 150	26
PQB6	11,400	8.5 x 4.5 x 0.3	800 x 900 x 300	67
PQB7	15,000	10 x 5 x 0.3	800 x 900 x 350	75
PQB8	24,700	15 x 5.5 x 0.3	800 x 900 x 400	86
PQB9	7,500	5 x 5 x 0.3	700 x 800 x 200	45
PQB10	5,000	4.1 x 4.1 x 0.3	700 x 700 x 150	32



Inmechco[®]
Since 1999



SpillKlean[™]
H-SERIES
SPILL CONTAINMENT
PALLET & DECK



HIBC-YE-D

SINGLE IBC SPILL CONTAINMENT PALLET WITH DRAIN

- Rotational molding
- 100% LLDPE wide chemicals resistance
- 2-Way Fork-liftable & Pallet Jack-able
- Nestable for shipping and storage
- For 1 x IBC or smaller containers
- Removeable grate for quick and easy clean-up
- Meet EPA40 & CFR264.175

Length (mm)	Width (mm)	Height (mm)	Weight (Kg)	Sump Capacity (Liters)	Max. Load Capacity, UDL (Kg)
1600	1600	700	100	1100	4000



H2IBC-YE-D

DOUBLE IBC SPILL CONTAINMENT PALLET WITH DRAIN

- Rotational molding
- 100% LLDPE wide chemicals resistance
- 2-Way Fork-liftable & Pallet Jack-able
- Nestable for shipping and storage
- For 2 x IBC or smaller containers
- Removeable grate for quick and easy clean-up
- Meet EPA40 & CFR264.175



Length (mm)	Width (mm)	Height (mm)	Weight (Kg)	Sump Capacity (Liters)	Max. Load Capacity, UDL (Kg)
2200	1300	500	105	1100	4000

H2D-YE-D

2-DRUM SPILL CONTAINMENT PALLET WITH DRAIN

- Rotational molding
- 100% LLDPE wide chemicals resistance
- 2-Way Fork-liftable & Pallet Jack-able
- Nestable for shipping and storage
- For 2 x 205 Liter drums or smaller containers
- 1 x Removeable grate for quick and easy clean-up
- Meet EPA40 & CFR264.175

Length (mm)	Width (mm)	Height (mm)	Weight (Kg)	Sump Capacity (Liters)	Max. Load Capacity, UDL (Kg)
1300	690	300	20	120	1300



H4D-YE-D

4-DRUM SPILL CONTAINMENT PALLET WITH DRAIN

- Rotational molding
- 100% LLDPE wide chemicals resistance
- 4-Way Fork-liftable & Pallet Jack-able
- Nestable for shipping and storage
- For 4 x 205 Liters drum or smaller containers
- 2 x Removeable grate for quick and easy clean-up
- Meet EPA40 & CFR264.175



Length (mm)	Width (mm)	Height (mm)	Weight (Kg)	Sump Capacity (Liters)	Max. Load Capacity, UDL (Kg)
1300	1300	300	35	260	2700

H1D-YE-D

1-DRUM SPILL CONTAINMENT DECK WITH DRAIN



- Rotational molding
- 100% LLDPE wide chemicals resistance
- 2-Way Fork-liftable & Pallet Jack-able
- Nestable for shipping and storage
- For 1 x 205 Liter drums or smaller containers
- 1 x Removeable grate for quick and easy clean-up

Length (mm)	Width (mm)	Height (mm)	Weight (Kg)	Sump Capacity (Liters)	Max. Load Capacity, UDL (Kg)
720	720	150	10	25	500

H2DD-YE-D

2-DRUM SPILL CONTAINMENT DECK WITH DRAIN

- Rotational molding
- 100% LLDPE wide chemicals resistance
- 2-Way Fork-liftable & Pallet Jack-able
- Nestable for shipping and storage
- For 2 x 205 Liter drums or smaller containers
- 1 x Removeable grate for quick and easy clean-up
- Meet EPA40 & CFR264.175

Length (mm)	Width (mm)	Height (mm)	Weight (Kg)	Sump Capacity (Liters)	Max. Load Capacity, UDL (Kg)
1300	690	150	15	70	1300



H4DD-YE-D

4-DRUM SPILL CONTAINMENT DECK WITH DRAIN



- Rotational molding
- 100% LLDPE wide chemicals resistance
- 4-Way Fork-liftable & Pallet Jack-able
- Nestable for shipping and storage
- For 4 x 205 Liters drum or smaller containers
- 2 x Removeable grate for quick and easy clean-up
- Meet EPA40 & CFR264.175

Length (mm)	Width (mm)	Height (mm)	Weight (Kg)	Sump Capacity (Liters)	Max. Load Capacity, UDL (Kg)
1300	1300	150	30	120	2700

HDG-BK

SPILL CONTAINMENT PALLET REPLACEMENT GRATE – BLACK

- Rotational molding
- LLDPE wide chemicals resistance.
- Dimensions: 1200(L) x 600(W) x 80(H)mm
- Suit to H2D-YE-D & H4D-YE-D



HDDG-1-BK

1-DRUM SPILL DECK REPLACEMENT GRATE – BLACK

- Rotational molding
- LLDPE wide chemicals resistance.
- Dimensions: 600(L) x 600(W) x 45(H)mm
- Suit to H1D-YE-D

HDDG-BK

SPILL CONTAINMENT DECK REPLACEMENT GRATE – BLACK

- Rotational molding
- LLDPE wide chemicals resistance.
- Dimensions: 1200(L) x 600(W) x 45(H)mm
- Suit to H2DD-YE-D & H4DD-YE-D



HDP-W

SPILL CONTAINMENT PALLET & DECK – DRAIN PLUG

- LLDPE wide chemicals resistance Drain Plug with Seal.
- Thread Size: 1/2"

HDDR-YE

SPILL CONTAINMENT DECK RAMP - YELLOW



- Tough single piece Rotation molded & 100% LLDPE wide chemical resistance ramp.
- Ramp attaches to Spill Containment Deck for extra stability.
- Suitable for hand trolley.
- HDDR-YE suit to H1D-YE-D/ H2DD-YE-D & H4DD-YE-D

Length (mm)	Width (mm)	Height (mm)	Weight (Kg)	Max. Load Capacity, UDL (Kg)
1200	800	150	16	500

HDR-BK

SPILL CONTAINMENT PALLET RAMP - BLACK

- Tough single piece Rotation molded & 100% LLDPE wide chemical resistance ramp.
- Ramp attaches to Spill Containment Pallet for extra stability.
- Suitable for hand trolley.
- HDR-BK suit to H2D-YE-D & H4D-YE-D

Length (mm)	Width (mm)	Height (mm)	Weight (Kg)	Max. Load Capacity, UDL (Kg)
1200	800	300	22	500



HDDR-YE

DRUM DOLLY WITH DRAIN

- Rotational molding.
- Ideal for mobile fluid collection and vertical dispensing.
- Collect incidental spills and prevent slip hazard.
- With Stainless Steel 304 sturdy handle and rotating lock-able wheels.

Height (mm)	Diameter - Drum Space (mm)	Weight (Kg)	Max. Load Capacity, UDL (Kg)
870	590	16	500



HLT-YE

POLY LAB TRAY WITH GRATE



- Tough single piece Rotation molded & 100% LLDPE wide chemical resistance without metal parts or rust or corrode.
- Spill protection for laboratory bench
- Removeable grate for quick and easy clean-up

Length (mm)	Width (mm)	Height (mm)	Weight (Kg)	Sump Capacity (Liters)	Max. Load - UDL (Kg)
530	410	120	3.6	11	100

Inmechco[®]
Since 1999



 **SCHOELLER**
INDUSTRIES

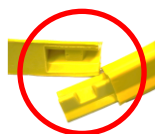
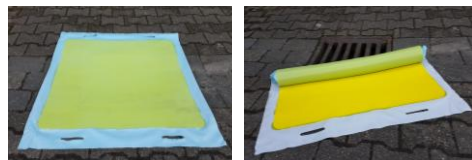


**POLYURETHANE
DRAIN COVER
BARRIERS
CONICAL PLUGS**

SCHOELLER POLYURETHANE DRAIN COVER

- Ideal for quick sealing of manhole shafts with surface leaked liquid
- Also suitable for preventive use during transport, loading and unloading as well as transfer of hazardous substances
- Strong adhesive on the bottom side to ensure liquid tight sealing
- Reusable, can be cleaned with soap and water
- Polyurethane Drain Cover has a sticky bottom side and the upper side is out of a Polyester Silicon Layer for a better protection and better resistance
- It come with handles on both sides for easy and quick handling
- Resistance to oil and most chemicals

P/N	Shape - Dimension (L x W x T) mm	Weight (Kg)
TSSOBY45	Round - Ø450 x 8)	1.5
TSSOBY050	Square - 500 x 500 x 8	2.2
TSSOBY070	Square - 700 x 700 x 8	4.3
TSSOBY090	Square - 900 x 900 x 8	7.1
TSSOBY120	Square - 1200 x 1200 x 8	12.7



Connection end pieces



SCHOELLER POLYURETHANE BARRIERS

- Ideal for shutting off or quickly discharging randomly spilled chemical products before entering vent or manholes.
- Strong adhesive on the underside to ensure sealing
- Top side reinforced with mesh coated polyurethane and hand straps for safe and secure rapid handling
- Reusable, can be cleaned with soap and water
- Connecting end pieces (better sealing when connecting 2 barriers together)
- Including transport and storage box

P/N	Dimension (L x W x H)mm	Weight (Kg)
TSSOB45	450 x 45 x 45	1.5
TSSORY05	2000 x 50 x 60	2.2
TSSORY010	3000 x 100 x 70	4.3
TSSORY07-03	3000 x 70 x 50	7.1
TSSORY07-05	5000 x 70 x 50	12.7

SCHOELLER POLYURETHANE CONICAL PLUGS

- Ideal to quickly and effectively seal holes in drums, other containers, pipework etc.
- Each plug has a removable handle which helps when installing and removing it
- Each conical plug comes with a black storage bag (composition: polyurethane coating on a polyester frame)
- Resistance to chemical substances: No contraindication at: hydrofluoric acid, formaldehyde, hexane, methanol, glycol-propylene, petrol, kerosene
- *Attention with: Sulphuric acid (slight shrinkage), phenol 50°C (Significant swelling), 3 days tests*

P/N	Diameter Range & Height (mm)	Weight (Kg)
TSSOBK3570	Ø35-70 & 160	0.4
TSSOBK6092	Ø60-92 & 160	0.8
TSSOBK85120	Ø85-120 & 160	1.5
TSSOBK120180	Ø120-180 & 160	3.1
TSSOBK170230	Ø170-230 & 160	5.6





ROBUND BUNDING SOLUTION



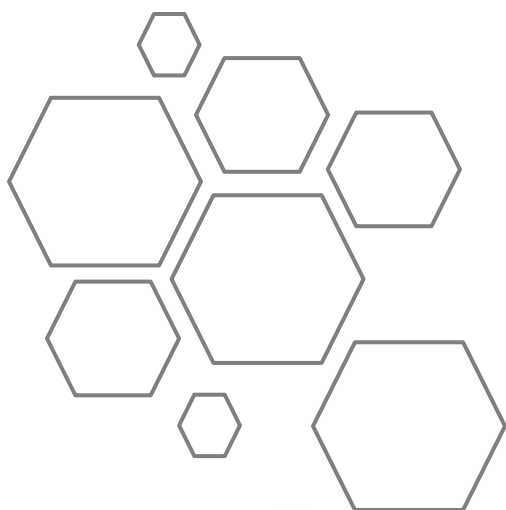
- Converting any area or even your whole workshop or warehouse, into a securely bunded area has just become simple.
- Unlike concrete and rubber alternatives, this generation urethane bunding will not chip, split or crack
- Each kit comes complete with sealant/ adhesive and masonry anchors and step-by-step instructions.
- Pieces can be easily cut to size with a fine-tooth saw
- Robund is purpose made for bunding high traffic areas and has excellent chemical resistance properties.

Item Code	Dimension (L x W x H)mm
RPB1	1000 x 150 x 25
RPBC	90° (350 x 350) x 150 x 25

TEMPORARY TANK & DRUM REPAIR PUTTY [PIU800]

- Plugitup Putty (PIU800) Stop leaks from drums and tanks at the source
- No surface or putty preparation is required
- Simply scoop putty out and press over the hole
- Adhesive and chemical resistant
- Effective up to 0.25 bar (8ft head pressure)
- Adheres to metal, plastic and glass
- Perfect addition to any Spill Response Kit
- Buys precious time and saves valuable liquids
- 800 Grams/ Tub





**POLYPROPYLENE (PP)
CORROSIVE & ACID CABINETS - WHITE**



POLYPROPYLENE (PP) CORROSIVE & ACID CABINETS - WHITE

HPSC2-W

2-GALLON PP CORROSIVE & ACID CABINET

- Single door & Lockable (Dual-Lock) for great security
- 100% White Polypropylene (PP)
- Polypropylene (PP) construction provides excellent resistance to acids and corrosives.
- With highly visible reflective corrosive label.

Width (mm)	Depth (mm)	Height (mm)	Weight (Kg)	Capacity (Gallon/ Liters)	Number Of Shelf
330	330	330	8	2/ 7.6	-



HPSC4-W

4-GALLON PP CORROSIVE & ACID CABINET

- Single door & Lockable (Dual-Lock) for great security
- 100% White Polypropylene (PP)
- Polypropylene (PP) construction provides excellent resistance to acids and corrosives.
- With 1 adjustable shelf & load capacity of 20kgs/ shelf.
- Additional shelf [346(L) x 330(D) x 38(H)mm] – HPSC4S are available as an optional extra.
- With highly visible reflective corrosive label.



Width (mm)	Depth (mm)	Height (mm)	Weight (Kg)	Capacity (Gallon/ Liters)	Number Of Shelf
430	430	590	11	4/ 15	1

HPSC12-W

12-GALLON PP CORROSIVE & ACID CABINET

- Single door & Lockable (Dual-Lock) for great security
- 100% White Polypropylene (PP)
- Polypropylene (PP) construction provides excellent resistance to acids and corrosives.
- With 1 adjustable shelf & load capacity of 20kgs/ shelf.
- Additional shelf [500(L) x 360(D) x 38(H)mm] – HPSC12/22S are available as an optional extra.
- With highly visible reflective corrosive label.

Width (mm)	Depth (mm)	Height (mm)	Weight (Kg)	Capacity (Gallon/ Liters)	Number Of Shelf
460	590	890	25	12/ 45	1





POLYPROPYLENE (PP) CORROSIVE & ACID CABINETS - WHITE

HPSC22-W

22-GALLON PP CORROSIVE & ACID CABINET

- Single door & Lockable (Dual-Lock) for great security
- 100% White Polypropylene (PP)
- Polypropylene (PP) construction provides excellent resistance to acids and corrosives.
- With 2 adjustable shelf & load capacity of 20kgs/ shelf.
- Additional shelf [500(L) x 360(W) x 38(H)mm] – HPSC12/22S are available as an optional extra.
- With highly visible reflective corrosive label.

Width (mm)	Depth (mm)	Height (mm)	Weight (Kg)	Capacity (Gallon/ Liters)	Number Of Shelf
590	460	1650	25	22/ 83	2



HPSC30-W

30-GALLON PP CORROSIVE & ACID CABINET

- Double door & Lockable (Dual-Lock) for great security
- 100% White Polypropylene (PP)
- Polypropylene (PP) construction provides excellent resistance to acids and corrosives.
- With adjustable shelf & load capacity of 20kgs/ shelf.
- Additional shelf [1000(L) x 360(D) x 38(H)mm] – HPSC30/45S are available as an optional extra.
- With highly visible reflective corrosive label.

Width (mm)	Depth (mm)	Height (mm)	Weight (Kg)	Capacity (Gallon/ Liters)	Number Of Shelf
1120	460	1090	52	30/ 114	1



HPSC45-W

45-GALLON PP CORROSIVE & ACID CABINET

- Double door & Lockable (Dual-Lock) for great security
- 100% White Polypropylene (PP)
- Polypropylene (PP) construction provides excellent resistance to acids and corrosives.
- With 2 adjustable shelf & load capacity of 20kgs/ shelf.
- Additional shelf [1000(L) x 360(W) x 38(H)mm] – HPSC30/45S are available as an optional extra.
- With highly visible reflective corrosive label.

Width (mm)	Depth (mm)	Height (mm)	Weight (Kg)	Capacity (Gallon/ Liters)	Number Of Shelf
1000	490	1650	75	45/ 170	2





POLYPROPYLENE (PP) CORROSIVE & ACID CABINETS - WHITE

HPSC60-W

60-GALLON PP CORROSIVE & ACID CABINET

- Double door & Lockable (Dual-Lock) for great security
- 100% White Polypropylene (PP)
- Polypropylene (PP) construction provides excellent resistance to acids and corrosives.
- With 2 adjustable shelf & load capacity of 20kgs/ shelf.
- Additional shelf [770(L) x 760(D) x 38(H)mm] – HPSC60S are available as an optional extra.
- With highly visible reflective corrosive label.

Width (mm)	Depth (mm)	Height (mm)	Weight (Kg)	Capacity (Gallon/ Liters)	Number Of Shelf
860	860	1650	60/ 227	82	2



HPSC90-W

90-GALLON PP CORROSIVE & ACID CABINET

- Double door & Lockable (Dual-Lock) for great security
- 100% White Polypropylene (PP)
- Polypropylene (PP) construction provides excellent resistance to acids and corrosives.
- With adjustable shelf & load capacity of 20kgs/ shelf.
- Additional shelf [1000(L) x 760(D) x 38(H)mm] – HPSC90S are available as an optional extra.
- With highly visible reflective corrosive label.

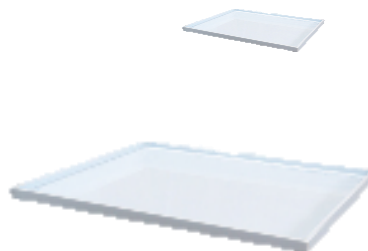
Width (mm)	Depth (mm)	Height (mm)	Weight (Kg)	Capacity (Gallon/ Liters)	Number Of Shelf
1090	860	1650	90	90/ 347	2



PP CABINETS - ADDITIONAL SHELF

- Polypropylene (PP) construction provides excellent resistance to acids and corrosives.
- Load capacity of 20kgs/ shelf.

Shelf (MODEL)	Length (mm)	Depth (mm)	Height (mm)	For PP Cabinet (MODEL)
HPSC4S	346	330	38	HPSC4-W
HPSC12/22S	500	360	38	HPSC12-W & HPSC22-W
HPSC30/45S	1000	360	38	HPSC30-W & HPSC45-W
HPSC60S	770	760	38	HPSC60-W
HPSC90S	1000	760	38	HPSC90-W





**POLYETHYLENE (LDPE)
ACID CABINETS - BLUE**

HPSC4-B

4-GALLON POLYETHYLENE ACID CABINET

- Polyethylene construction provides excellent resistance to harsh acids and corrosives.
- with seamless structure and secondary leakage prevention and control.
- Single door & Lockable with padlocked (not included) for great security
- Load capacity of 20kgs/ shelf.
- Volume of Bottom Leakage Sump Capacity: 1.79 Gallon/ 6.8 Liters.

Width (mm)	Depth (mm)	Height (mm)	Weight (Kg)	Capacity (Gallon/ Liters)	Number Of Shelf
410	360	490	7	4/ 15	1



HPSC22-B

22-GALLON POLYETHYLENE ACID CABINET

- Polyethylene construction provides excellent resistance to harsh acids and corrosives.
- with seamless structure and secondary leakage prevention and control.
- Double door & Lockable with padlocked (not included) for great security
- 2 Compartments and each with 2 Shelf (Total 4 Shelf).
- Load capacity of 20kgs/ shelf.
- Volume of Bottom Leakage Sump Capacity: 3.17 Gallon/ 12 Liters.



Width (mm)	Depth (mm)	Height (mm)	Weight (Kg)	Capacity (Gallon/ Liters)	Number Of Shelf
905	544	890	35	22/ 83	4



INDUSTRIAL MARINE & MEDICAL SPILL KIT



SPILLFIX GENERAL PURPOSE (GP) ORGANIC ABSORBENT

- Contains no harmful dust to ensure a safe spill cleanup.
- Reduce clean up time and disposal costs by more than half.
- One (SpillFix -OA50L) 50L bag absorbs as much as 4 x 20Kg bags of “kitty litter”.
- Made from an annually renewable resource.
- No chemical residues.
- EPA approved.
- Fast Acting.

P/N	Description	Packing
SpillFix-OA50L	50 Liter Bag SpillFix GP Organic Absorbent	50L/ Bag
SpillFix-OA50L/42	42 x 50 Liter Bag SpillFix GP Organic Absorbent/ Pallet	42 x 50L Bag/ Pallet
SpillFix-OA15L	15 Liter Bag SpillFix GP Organic Absorbent	15L/ Bag
SpillFix-OA15L/ 122	122 x 15 Liter Bag SpillFix GP Organic Absorbent/ Pallet	122 x 15L Bag/ Pallet



It is estimated that the surface area of SpillFix Absorbent is approximately 0.6ha (6000 square meters) in a single liter. The large surface area is created by the hollow channel structure. This is how it can retain up to 5 times its own weight in liquid.



MINERAL SPONGE GRANULAR ABSORBENT

- Will not break down and become slippery when wet.
- Available in workplace safe 15kg and 9kg bags.
- Safe than clay based granules.
- Liquids stay “Lock Inside”
- Absorbs up to 50% more than “kitty litter”
- Meets EPA requirements for solid waste disposal.

P/N	Description	Packing
MS15	22 Liter Bag Super Absorbent Mineral Sponge	22L/ Bag
MS15/56	56 Bag x 22 Liter Bag Super Absorbent Mineral Sponge/ Pallet	56 x 22L Bag/ Pallet
MS9	9 Liter Bag Super Absorbent Mineral Sponge	9L/ Bag
MS9/80	80 Bag x 9 Liter Bag Super Absorbent Mineral Sponge/ Pallet	80 x 9L Bag/ Pallet



OIL-ONLY ABSORBENTS

- Oil-Only Absorbent have the unique property of repelling water and only absorbing oils and fuels.
- Suitable for use on both land and water surfaces.
- All pads and rolls are dimpled and laminated for superior strength and absorption.
- Easy-Tear perforations in our pads and rolls mean that you only use what you need.
- Its make from 100% virgin resin polypropylene and no recycled contaminants to reduce performance.
- High Performance Oil-Only Skimming Boom are double skinned and are fitted with snap hooks and rings.
- White color for easy recognition and fast response.

P/N	Description	Size	Packing
SpillKlean-H4843-4	Oil-Only Absorbent Pad – Heavy (400GSM)	48cm x 43cm	100Pcs/ Bale
SpillKlean-H4843	Oil-Only Absorbent Pad – Light (200GSM)	48cm x 43cm	100Pcs/ Bale
SpillKlean-H505-S	Oil-Only Absorbent Roll - Small	50cm x 50 Meter	1 Roll/ Bale
SpillKlean-H501-L	Oil-Only Absorbent Roll - Large	1 Meter x 50 Meter	1 Roll/ Bale
SpillKlean-H7612	Oil-Only Absorbent Sock - Short	Ø7.6cm x 1.2Meter	10Pcs/ Bale
SpillKlean-H7630	Oil-Only Absorbent Sock - Long	Ø7.6cm x 3 Meter	10Pcs/ Bale
SpillKlean-H4646	Oil-Only Absorbent Pillow	46cm x 46cm	16Pcs/ Bale
SpillKlean-H510	High Performance 5" Oil-Only Skimming Boom	Ø5" x 10Ft	4Pcs/ Bale
SpillKlean-H810	High Performance 8" Oil-Only Skimming Boom	Ø8" x 10 Ft	4Pcs/ Bale



**H4843[200Gsm]
H4843-4 [400Gsm]**



H4646



**H7612 [SHORT]
H7630 [LONG]**



H510 [Ø5" x 10Ft]



H810 [Ø8" x 10Ft]



**H505-S [SMALL]
H501-L [LARGE]**

20 LITER OIL-ONLY SPILL KIT [SpillKlean-20P-H]

Oil-Only: Absorb Oil, Not Water.

Quantity	Content
5Pcs	400Gsm Absorbent Pad (48cm x 43cm)
2Pcs	Absorbent Sock (Ø7.6cm x 1.2 Meter)
2Pcs	Absorbent Pillow (20cm x 25cm)
2 Set	Hazardous Material Bag with Cable-Tie
1 Pair	Nitrile Glove
1 Pair	Chemical Goggle (Anti-Fog)
1 Pail	20 Liter Industrial Pail with Spill Kit Label
1 Sheet	Spill Cleaning Guide/ Instruction Sheet
1 Sheet	Contain Check List



30 LITER OIL-ONLY SPILL KIT [SpillKlean-30-H]

Oil-Only: Absorb Oil, Not Water.

Quantity	Content
1	Highly Visible Yellow Water-Resistant Bag with Spill Kit Label
20	400Gsm Absorbent Pad (48cm x 43cm)
2	Absorbent Sock (Ø7.6cm x 1.2 Meter)
2	Hazardous Material Bag with Cable-Tie
1	Nitrile Glove
1	Spill Cleaning Guide/ Instruction Sheet
1	Contain Check List



50 LITER OIL-ONLY SPILL KIT [SpillKlean-50-H]

Oil-Only: Absorb Oil, Not Water.

Quantity	Content
1	Highly Visible Yellow Water-Resistant Bag with Spill Kit Label
30	400Gsm Absorbent Pad (48cm x 43cm)
2	Absorbent Sock (Ø7.6cm x 1.2 Meter)
1	Absorbent Pillow (46cm x 46cm)
3	Hazardous Material Bag with Cable-Tie
1	Nitrile Glove
1	Spill Cleaning Guide/ Instruction Sheet
1	Contain Check List



80 LITER OIL-ONLY SPILL KIT [SpillKlean-80-H]

Oil-Only: Absorb Oil, Not Water.

Quantity	Content
1	Highly Visible Yellow Water-Resistant Bag with Spill Kit Label
40	400Gsm Absorbent Pads (48cm x 43cm)
2	Absorbent Socks (Ø7.6cm x 1.2 Meter)
2	Absorbent Pillows (46cm x 46cm)
3	Hazardous Material Bag with Cable-Tie
1	Nitrile Glove
1	Spill Cleaning Guide/ Instruction Sheet
1	Contain Check List



120 LITER OIL-ONLY SPILL KIT [SpillKlean-120-H]

- Oil-Only: Absorb Oil, Not Water.
- 120 Liters (32 Gallon) HDPE Spill Kit comes with wheels.
- Spill bin can be reuse to replenish new absorbent or disposal of used absorbent. Flapped cover prevents spill from leaking or evaporating out from the spill bin.
- Ideal for medium size spill response.

Quantity	Content
1	120 Liter Spill Bin with Wheels & Spill Kit Label
100	200Gsm Absorbent Pads (48cm x 43cm)
3	Absorbent Socks (Ø7.6cm x 1.2 Meter)
2	Absorbent Pillow (46cm x 46cm)
10	Hazardous Material Bag with Cable-Tie
2	Disposable Coverall
2	Chemical Goggle (Anti-Fog)
2	Nitrile Glove
1	Spill Cleaning Guide/ Instruction Sheet
1	Contain Check List



240 LITER OIL-ONLY SPILL KIT [SpillKlean-240-H]

- Oil-Only: Absorb Oil, Not Water.
- 240 Liters (64 Gallon) HDPE Spill Kit comes with wheels.
- Spill bin can be reuse to replenish new absorbent or disposal of used absorbent. Flapped cover prevents spill from leaking or evaporating out from the spill bin.
- Ideal for medium size spill response.

Quantity	Content
1	240 Liter Spill Bin with Wheels & Spill Kit Label
100	400Gsm Absorbent Pads (48cm x 43cm)
4	Absorbent Socks (Ø7.6cm x 3 Meter)
8	Absorbent Pillow (46cm x 46cm)
10	Hazardous Material Bag with Cable-Tie
2	Disposable Coverall
2	Chemical Goggle (Anti-Fog)
2	Nitrile Glove
1	Spill Cleaning Guide/ Instruction Sheet
1	Contain Check List



20 GALLON OIL-ONLY SPILL KIT [SpillKlean-20G-H]

- Oil-Only: Absorb Oil, Not Water.
- 20 Gallon UN Rating 1H2/ X57/S Screw-On Lid Overpack
- Overpack can be reuse to replenish new absorbent or disposal of used absorbent.



Quantity	Content
1	20 Gallon UN Rating Overpack with Spill Kit Label
50	200Gsm Absorbent Pads (48cm x 43cm)
5	Absorbent Socks (Ø7.6cm x 1.2 Meter)
3	Hazardous Material Bag with Cable-Tie
1	Chemical Goggle (Anti-Fog)
1	Nitrile Glove
1	Spill Cleaning Guide/ Instruction Sheet
1	Contain Check List

30 GALLON OIL-ONLY SPILL KIT [SpillKlean-30G-H]

- Oil-Only: Absorb Oil, Not Water.
- 30 Gallon UN Rating 1H2/ X57/S Screw-On Lid Overpack
- Overpack can be reuse to replenish new absorbent or disposal of used absorbent.

Quantity	Content
1	30 Gallon UN Rating Overpack with Spill Kit Label
100	200Gsm Absorbent Pads (48cm x 43cm)
5	Absorbent Socks (Ø7.6cm x 1.2 Meter)
2	Disposable Coverall
5	Hazardous Material Bag with Cable-Tie
2	Chemical Goggle (Anti-Fog)
2	Nitrile Glove
1	Spill Cleaning Guide/ Instruction Sheet
1	Contain Check List



65 GALLON OIL-ONLY SPILL KIT [SpillKlean-65G-H]

- Oil-Only: Absorb Oil, Not Water.
- 95 Gallon Overpack
- Overpack can be reuse to replenish new absorbent or disposal of used absorbent.



Quantity	Content
1	95 Gallon Overpack with Spill Kit Label
200	200Gsm Absorbent Pads (48cm x 43cm)
8	Absorbent Socks (Ø7.6cm x 1.2 Meter)
4	Absorbent Pillow (46cm x 46cm)
10	Hazardous Material Bag with Cable-Tie
2	Disposable Coverall
2	Chemical Goggle (Anti-Fog)
2	Nitrile Glove
1	Spill Cleaning Guide/ Instruction Sheet
1	Contain Check List

95 GALLON OIL-ONLY SPILL KIT [SpillKlean-95G-H]

- Oil-Only: Absorb Oil, Not Water.
- 95 Gallon Overpack
- Overpack can be reuse to replenish new absorbent or disposal of used absorbent.

Quantity	Content
1	95 Gallon Overpack with Spill Kit Label
250	200Gsm Absorbent Pads (48cm x 43cm)
18	Absorbent Socks (Ø7.6cm x 1.2 Meter)
6	Absorbent Pillow (46cm x 46cm)
10	Hazardous Material Bag with Cable-Tie
2	Disposable Coverall
2	Chemical Goggle (Anti-Fog)
2	Nitrile Glove
1	Spill Cleaning Guide/ Instruction Sheet
1	Contain Check List



660 LITER MARINE SOPEP (4 BARREL) SPILL KIT [SpillKlean-660-H]

- Oil-Only: Absorb Oil, Not Water.
- 660 Liters Large Polyethylene 4-Wheels Bin (2 Wheels Lockable).

Quantity	Content
1	660 Liter Spill Bin with 4-Wheels Top Opening (2 Wheels Lockable) & Spill Kit Label
400	200Gsm Absorbent Pads (48cm x 43cm)
20	Absorbent Socks (Ø7.6cm x 1.2 Meter)
16	Absorbent Pillow (46cm x 46cm)
4	High Performance Ø5" Skimming Booms (Ø5" x 10Ft)
25	Hazardous Material Bag with Cable-Tie
1	Spill Clean-Up in Progress Floor Sign
1	Hazard Warning Barrier Tape (Red/ White)
2	Disposable Coverall
2	Chemical Goggle (Anti-Fog)
2	Nitrile Glove
1	Contain Check List



1100 LITER MARINE SOPEP (7 BARREL) SPILL KIT [SpillKlean-1100-H]

- Oil-Only: Absorb Oil, Not Water.
- 1100 Liters Large Polyethylene 4-Wheels Bin (2 Wheels Lockable).

Quantity	Content
1	1000 Liter Spill Bin with 4-Wheels Top Opening (2 Wheels Lockable) & Spill Kit Label
600	200Gsm Absorbent Pads (48cm x 43cm)
1	Absorbent Roll (50cm x 50 Meter)
20	Absorbent Pillow (46cm x 46cm)
8	High Performance Ø5" Skimming Booms (Ø5" x 10Ft)
25	Hazardous Material Bag with Cable-Tie
1	Spill Clean-Up in Progress Floor Sign
1	Hazard Warning Barrier Tape (Red/ White)
2	Disposable Coverall
2	Chemical Goggle (Anti-Fog)
2	Nitrile Glove
1	Contain Check List



1900 LITER MARINE SOPEP (12 BARREL) SPILL KIT [SpillKlean-1900-H]

- Oil-Only: Absorb Oil, Not Water.
- 1900 Liters Large Polyethylene 4-Wheels Bin (2 Wheels Lockable).

Quantity	Content
1	1400 Liter Spill Bin with 4-Wheels Top Opening (2 Wheels Lockable) & Spill Kit Label
800	200Gsm Absorbent Pads (48cm x 43cm)
2	Absorbent Roll (50cm x 50 Meter)
30	Absorbent Pillow (46cm x 46cm)
16	High Performance Ø5" Skimming Booms (Ø5" x 10Ft)
20	Hazardous Material Bag with Cable-Tie
1	Hard Bristle Broom
1	Spark proof Shovel
2	Disposable Coverall
2	Chemical Goggle (Anti-Fog)
2	Nitrile Glove
1	20L Plastic Bucket with Cover
1	Contain Check List



WATER BASE OIL DISPERSER –TYPE II [680WBC2/25]



- Approved Type II ready-to-use water-based dispersant which contains highly effective emulsifiers, dispersants and a water-soluble solvent.
- Standard Packing: 25 Liter/ Carboy
- Application:-
 - Is used for the dispersing of oil discharge on land and oil spills at sea.
 - It is also highly recommended for cleaning and removing spillage on platforms, decks, rigs, boats, barges and any oily or greasy hard surfaces.
 - Treated surfaces can be flushed overboard without causing a slick.
 - It also can be used as a light duty degreaser for cleaning pipes, engine parts, equipment, etc.
- Benefits:-
 - Fast Action: Readily emulsifies oil
 - Non-Flammable: No fire risk
 - Low-Toxic: Safe on marine life
 - No Fumes or objectionable odour
 - Excellent Multipurpose detergent
 - Biodegradable
 - Approved by Maritime and Port Authority of Singapore (MPA)

UNIVERSAL ABSORBENTS

- Made from 100% virgin resin polypropylene and do not have recycled content that can compromise strength, absorption and chemical resistance.
- All pads and rolls are dimpled and laminated for superior strength and absorption.
- Easy-Tear perforations in our pads and rolls mean that you only use what you need.
- Suitable to use with a wide range of chemicals including hydrocarbons, agricultural chemicals, coolant and even battery acid.
- Grey color for easy recognition and fast response.

P/N	Description	Size	Packing
SpillKlean-GP4843-4	Universal Absorbent Pad – Heavy (400GSM)	48cm x 43cm	100Pcs/ Bale
SpillKlean-GP4843	Universal Absorbent Pad – Light (200GSM)	48cm x 43cm	100Pcs/ Bale
SpillKlean-GP505-S	Universal Absorbent Roll - Small	50cm x 50 Meter	1 Roll/ Bale
SpillKlean-GP501-L	Universal Absorbent Roll - Large	1 Meter x 50 Meter	1 Roll/ Bale
SpillKlean-GP7612	Universal Absorbent Sock - Short	Ø7.6cm x 1.2Meter	10Pcs/ Bale
SpillKlean-GP7630	Universal Absorbent Sock - Long	Ø7.6cm x 3 Meter	10Pcs/ Bale
SpillKlean-GP4646	Universal Absorbent Pillow	46cm x 46cm	10Pcs/ Bale



**GP4843[200Gsm]
GP4843-4 [400Gsm]**



**GP7612 [SHORT]
GP7630 [LONG]**



GP4646

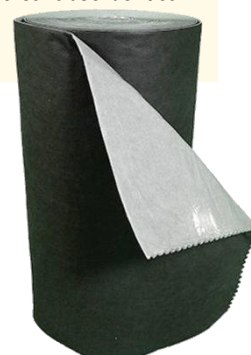
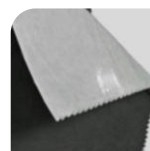
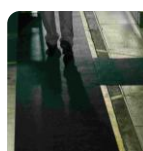


**GP505-S [SMALL]
GP501-L [LARGE]**

TRIPLE LAYER HIGH TRAFFIC MATTING

- Perfect for walk ways, trance ways, when working under vehicles and around plant and machinery.
- Absorb oils, hydraulic fluid, paint, diesel, coolant, cutting fluid, grease and etc.
- The leak-proof backing grips the floor to ensure a clean & safe walkway.
- Construct of 3 layer & the scuff and tear resistant upper layer is suitable for heavy foot traffic and even forklifts.
- Top layer: The calendered, reinforced top layer is low lint and abrasion resistant and in dark color hides the grease and grime.
- Middle Layer: High absorbency Microsorb PP Fibres lie underneath the tough upper layer. The universal absorbent can hold up to 5L/m².
- Lower Layer: Unique non-slip leak-proof backing grips and protects the floor.

P/N	Description	Size	Packing
SpillKlean-308HTM	Triple Layer Hight Traffic Matting	80cm x 30 Meter	1 Roll/ Bale





GENERAL PURPOSE/ UNIVERSAL SPILL KIT

20 LITER UNIVERSAL SPILL KIT [SpillKlean-20P-GP]

Absorbs Oil, Water, Coolants and Solvents.

Quantity	Content
5Pcs	400Gsm Absorbent Pad (48cm x 43cm)
2Pcs	Absorbent Sock (Ø7.6cm x 1.2 Meter)
2Pcs	Absorbent Pillow (20cm x 25cm)
2 Set	Hazardous Material Bag with Cable-Tie
1 Pair	Nitrile Glove
1 Pair	Chemical Goggle (Anti-Fog)
1 Pail	20 Liter Industrial Pail with Spill Kit Label
1 Sheet	Spill Cleaning Guide/ Instruction Sheet
1 Sheet	Contain Check List



30 LITER UNIVERSAL SPILL KIT [SpillKlean-30-GP]

Absorbs Oil, Water, Coolants and Solvents.

Quantity	Content
1	Highly Visible Yellow Water-Resistant Bag with Spill Kit Label
20	400Gsm Absorbent Pad (48cm x 43cm)
2	Absorbent Sock (Ø7.6cm x 1.2 Meter)
2	Hazardous Material Bag with Cable-Tie
1	Nitrile Glove
1	Spill Cleaning Guide/ Instruction Sheet
1	Contain Check List



50 LITER UNIVERSAL SPILL KIT [SpillKlean-50-GP]

Absorbs Oil, Water, Coolants and Solvents.

Quantity	Content
1	Highly Visible Yellow Water-Resistant Bag with Spill Kit Label
30	400Gsm Absorbent Pad (48cm x 43cm)
2	Absorbent Sock (Ø7.6cm x 1.2 Meter)
1	Absorbent Pillow (46cm x 46cm)
3	Hazardous Material Bag with Cable-Tie
1	Nitrile Glove
1	Spill Cleaning Guide/ Instruction Sheet
1	Contain Check List



80 LITER UNIVERSAL SPILL KIT [SpillKlean-80-GP]

Absorbs Oil, Water, Coolants and Solvents..

Quantity	Content
1	Highly Visible Yellow Water-Resistant Bag with Spill Kit Label
40	400Gsm Absorbent Pads (48cm x 43cm)
2	Absorbent Socks (Ø7.6cm x 1.2 Meter)
2	Absorbent Pillows (46cm x 46cm)
3	Hazardous Material Bag with Cable-Tie
1	Nitrile Glove
1	Spill Cleaning Guide/ Instruction Sheet
1	Contain Check List



120 LITER UNIVERSAL SPILL KIT [SpillKlean-120-GP]

- Absorbs Oil, Water, Coolants and Solvents.
- 120 Liters (32 Gallon) HDPE Spill Kit comes with wheels.
- Spill bin can be reuse to replenish new absorbent or disposal of used absorbent. Flapped cover prevents spill from leaking or evaporating out from the spill bin.
- Ideal for medium size spill response.



Quantity	Content
1	120 Liter Spill Bin with Wheels & Spill Kit Label
100	200Gsm Absorbent Pads (48cm x 43cm)
3	Absorbent Socks (Ø7.6cm x 1.2 Meter)
2	Absorbent Pillow (46cm x 46cm)
10	Hazardous Material Bag with Cable-Tie
2	Disposable Coverall
2	Chemical Goggle (Anti-Fog)
2	Nitrile Glove
1	Spill Cleaning Guide/ Instruction Sheet
1	Contain Check List

240 LITER UNIVERSAL SPILL KIT [SpillKlean-240-GP]

- Absorbs Oil, Water, Coolants and Solvents.
- 240 Liters (64 Gallon) HDPE Spill Kit comes with wheels.
- Spill bin can be reuse to replenish new absorbent or disposal of used absorbent. Flapped cover prevents spill from leaking or evaporating out from the spill bin.
- Ideal for medium size spill response.

Quantity	Content
1	240 Liter Spill Bin with Wheels & Spill Kit Label
100	400Gsm Absorbent Pads (48cm x 43cm)
4	Absorbent Socks (Ø7.6cm x 3 Meter)
8	Absorbent Pillow (46cm x 46cm)
10	Hazardous Material Bag with Cable-Tie
2	Disposable Coverall
2	Chemical Goggle (Anti-Fog)
2	Nitrile Glove
1	Spill Cleaning Guide/ Instruction Sheet
1	Contain Check List



20 GALLON UNIVERSAL SPILL KIT [SpillKlean-20G-GP]

- Absorbs Oil, Water, Coolants and Solvents.
- 20 Gallon UN Rating 1H2/ X57/S Screw-On Lid Overpack
- Overpack can be reuse to replenish new absorbent or disposal of used absorbent.



Quantity	Content
1	20 Gallon UN Rating Overpack with Spill Kit Label
50	200Gsm Absorbent Pads (48cm x 43cm)
5	Absorbent Socks (Ø7.6cm x 1.2 Meter)
3	Hazardous Material Bag with Cable-Tie
1	Chemical Goggle (Anti-Fog)
1	Nitrile Glove
1	Spill Cleaning Guide/ Instruction Sheet
1	Contain Check List

30 GALLON UNIVERSAL SPILL KIT [SpillKlean-30G-GP]

- Absorbs Oil, Water, Coolants and Solvents.
- 30 Gallon UN Rating 1H2/ X57/S Screw-On Lid Overpack
- Overpack can be reuse to replenish new absorbent or disposal of used absorbent.

Quantity	Content
1	30 Gallon UN Rating Overpack with Spill Kit Label
100	200Gsm Absorbent Pads (48cm x 43cm)
5	Absorbent Socks (Ø7.6cm x 1.2 Meter)
2	Disposable Coverall
5	Hazardous Material Bag with Cable-Tie
2	Chemical Goggle (Anti-Fog)
2	Nitrile Glove
1	Spill Cleaning Guide/ Instruction Sheet
1	Contain Check List



65 GALLON UNIVERSAL SPILL KIT [SpillKlean-65G-H]

- Absorbs Oil, Water, Coolants and Solvents.
- 95 Gallon Overpack
- Overpack can be reuse to replenish new absorbent or disposal of used absorbent.



Quantity	Content
1	95 Gallon Overpack with Spill Kit Label
200	200Gsm Absorbent Pads (48cm x 43cm)
8	Absorbent Socks (Ø7.6cm x 1.2 Meter)
4	Absorbent Pillow (46cm x 46cm)
10	Hazardous Material Bag with Cable-Tie
2	Disposable Coverall
2	Chemical Goggle (Anti-Fog)
2	Nitrile Glove
1	Spill Cleaning Guide/ Instruction Sheet
1	Contain Check List

95 GALLON UNIVERSAL SPILL KIT [SpillKlean-95G-GP]

- Absorbs Oil, Water, Coolants and Solvents.
- 95 Gallon Overpack
- Overpack can be reuse to replenish new absorbent or disposal of used absorbent.

Quantity	Content
1	95 Gallon Overpack with Spill Kit Label
250	200Gsm Absorbent Pads (48cm x 43cm)
18	Absorbent Socks (Ø7.6cm x 1.2 Meter)
6	Absorbent Pillow (46cm x 46cm)
10	Hazardous Material Bag with Cable-Tie
2	Disposable Coverall
2	Chemical Goggle (Anti-Fog)
2	Nitrile Glove
1	Spill Cleaning Guide/ Instruction Sheet
1	Contain Check List



CHEMICAL ABSORBENTS

- Made from 100% virgin resin polypropylene and do not have recycled content that can compromise strength, absorption and chemical resistance.
- Absorbent are available in a range of forms including pads, rolls, pillows and socks.
- All pads and rolls are dimpled and laminated for superior strength and absorption.
- Easy-Tear perforations in our pads and rolls mean that you only use what you need.
- Suitable to use with a wide range of fluids from acids to solvents to pesticides.
- Yellow color for easy recognition and fast response.

P/N	Description	Size	Packing
SpillKlean-HZE4843-4	Chemical Absorbent Pad – Heavy (400GSM)	48cm x 43cm	100Pcs/ Bale
SpillKlean-HZE4843	Chemical Absorbent Pad – Light (200GSM)	48cm x 43cm	100Pcs/ Bale
SpillKlean-HZE505-S	Chemical Absorbent Roll - Small	50cm x 50 Meter	1 Roll/ Bale
SpillKlean-HZE501-L	Chemical Absorbent Roll - Large	1 Meter x 50 Meter	1 Roll/ Bale
SpillKlean-HZE7612	Chemical Absorbent Sock - Short	Ø7.6cm x 1.2Meter	10Pcs/ Bale
SpillKlean-HZE7630	Chemical Absorbent Sock - Long	Ø7.6cm x 3 Meter	10Pcs/ Bale
SpillKlean-HZE4646	Chemical Absorbent Pillow	46cm x 46cm	10Pcs/ Bale



**HZE4843[200Gsm]
HZE4843-4 [400Gsm]**



HZE4646



HZE7630 [LONG]



HZE7612 [SHORT]



**HZE505-S [SMALL]
GP501-L [LARGE]**

20 LITER CHEMICAL SPILL KIT [SpillKlean-20P-HZE]

Absorbs Oil, Water, Acids and Bases.

Quantity	Content
5Pcs	400Gsm Absorbent Pad (48cm x 43cm)
2Pcs	Absorbent Sock (Ø7.6cm x 1.2 Meter)
2Pcs	Absorbent Pillow (20cm x 25cm)
2 Set	Hazardous Material Bag with Cable-Tie
1 Pair	Nitrile Glove
1 Pair	Chemical Goggle (Anti-Fog)
1 Pail	20 Liter Industrial Pail with Spill Kit Label
1 Sheet	Spill Cleaning Guide/ Instruction Sheet
1 Sheet	Contain Check List



30 LITER CHEMICAL SPILL KIT [SpillKlean-30-HZE]

Absorbs Oil, Water, Acids and Bases.

Quantity	Content
1	Highly Visible Yellow Water-Resistant Bag with Spill Kit Label
20	400Gsm Absorbent Pad (48cm x 43cm)
2	Absorbent Sock (Ø7.6cm x 1.2 Meter)
2	Hazardous Material Bag with Cable-Tie
1	Nitrile Glove
1	Spill Cleaning Guide/ Instruction Sheet
1	Contain Check List

50 LITER CHEMICAL SPILL KIT [SpillKlean-50-HZE]

Absorbs Oil, Water, Acids and Bases.

Quantity	Content
1	Highly Visible Yellow Water-Resistant Bag with Spill Kit Label
30	400Gsm Absorbent Pad (48cm x 43cm)
2	Absorbent Sock (Ø7.6cm x 1.2 Meter)
1	Absorbent Pillow (46cm x 46cm)
3	Hazardous Material Bag with Cable-Tie
1	Nitrile Glove
1	Spill Cleaning Guide/ Instruction Sheet
1	Contain Check List



80 LITER CHEMICAL SPILL KIT [SpillKlean-80-HZE]

Absorbs Oil, Water, Acids and Bases.

Quantity	Content
1	Highly Visible Yellow Water-Resistant Bag with Spill Kit Label
40	400Gsm Absorbent Pads (48cm x 43cm)
2	Absorbent Socks (Ø7.6cm x 1.2 Meter)
2	Absorbent Pillows (46cm x 46cm)
3	Hazardous Material Bag with Cable-Tie
1	Nitrile Glove
1	Spill Cleaning Guide/ Instruction Sheet
1	Contain Check List



120 LITER CHMECAL SPILL KIT [SpillKlean-120-HZE]

- Absorbs Oil, Water, Acids and Bases.
- 120 Liters (32 Gallon) HDPE Spill Kit comes with wheels.
- Spill bin can be reuse to replenish new absorbent or disposal of used absorbent. Flapped cover prevents spill from leaking or evaporating out from the spill bin.
- Ideal for medium size spill response.



Quantity	Content
1	120 Liter Spill Bin with Wheels & Spill Kit Label
100	200Gsm Absorbent Pads (48cm x 43cm)
3	Absorbent Socks (Ø7.6cm x 1.2 Meter)
2	Absorbent Pillow (46cm x 46cm)
10	Hazardous Material Bag with Cable-Tie
2	Disposable Coverall
2	Chemical Goggle (Anti-Fog)
2	Nitrile Glove
1	Spill Cleaning Guide/ Instruction Sheet
1	Contain Check List

240 LITER CHEMICAL SPILL KIT [SpillKlean-240-HZE]

- Absorbs Oil, Water, Acids and Bases.
- 240 Liters (64 Gallon) HDPE Spill Kit comes with wheels.
- Spill bin can be reuse to replenish new absorbent or disposal of used absorbent. Flapped cover prevents spill from leaking or evaporating out from the spill bin.
- Ideal for medium size spill response.

Quantity	Content
1	240 Liter Spill Bin with Wheels & Spill Kit Label
100	400Gsm Absorbent Pads (48cm x 43cm)
4	Absorbent Socks (Ø7.6cm x 3 Meter)
8	Absorbent Pillow (46cm x 46cm)
10	Hazardous Material Bag with Cable-Tie
2	Disposable Coverall
2	Chemical Goggle (Anti-Fog)
2	Nitrile Glove
1	Spill Cleaning Guide/ Instruction Sheet
1	Contain Check List



20 GALLON CHEMICAL SPILL KIT [SpillKlean-20G-HZE]

- Absorbs Oil, Water, Acids and Bases.
- 20 Gallon UN Rating 1H2/ X57/S Screw-On Lid Overpack
- Overpack can be reuse to replenish new absorbent or disposal of used absorbent.



Quantity	Content
1	20 Gallon UN Rating Overpack with Spill Kit Label
50	200Gsm Absorbent Pads (48cm x 43cm)
5	Absorbent Socks (Ø7.6cm x 1.2 Meter)
3	Hazardous Material Bag with Cable-Tie
1	Chemical Goggle (Anti-Fog)
1	Nitrile Glove
1	Spill Cleaning Guide/ Instruction Sheet
1	Contain Check List

30 GALLON CHEMICAL SPILL KIT [SpillKlean-30G-HZE]

- Absorbs Oil, Water, Acids and Bases.
- 30 Gallon UN Rating 1H2/ X57/S Screw-On Lid Overpack
- Overpack can be reuse to replenish new absorbent or disposal of used absorbent.

Quantity	Content
1	30 Gallon UN Rating Overpack with Spill Kit Label
100	200Gsm Absorbent Pads (48cm x 43cm)
5	Absorbent Socks (Ø7.6cm x 1.2 Meter)
2	Disposable Coverall
5	Hazardous Material Bag with Cable-Tie
2	Chemical Goggle (Anti-Fog)
2	Nitrile Glove
1	Spill Cleaning Guide/ Instruction Sheet
1	Contain Check List



65 GALLON CHEMICAL SPILL KIT [SpillKlean-65G-HZE]

- Absorbs Oil, Water, Acids and Bases.
- 95 Gallon Overpack
- Overpack can be reuse to replenish new absorbent or disposal of used absorbent.



Quantity	Content
1	95 Gallon Overpack with Spill Kit Label
200	200Gsm Absorbent Pads (48cm x 43cm)
8	Absorbent Socks (Ø7.6cm x 1.2 Meter)
4	Absorbent Pillow (46cm x 46cm)
10	Hazardous Material Bag with Cable-Tie
2	Disposable Coverall
2	Chemical Goggle (Anti-Fog)
2	Nitrile Glove
1	Spill Cleaning Guide/ Instruction Sheet
1	Contain Check List

95 GALLON CHEMICAL SPILL KIT [SpillKlean-95G-HZE]

- Absorbs Oil, Water, Acids and Bases.
- 95 Gallon Overpack
- Overpack can be reuse to replenish new absorbent or disposal of used absorbent.

Quantity	Content
1	95 Gallon Overpack with Spill Kit Label
250	200Gsm Absorbent Pads (48cm x 43cm)
18	Absorbent Socks (Ø7.6cm x 1.2 Meter)
6	Absorbent Pillow (46cm x 46cm)
10	Hazardous Material Bag with Cable-Tie
2	Disposable Coverall
2	Chemical Goggle (Anti-Fog)
2	Nitrile Glove
1	Spill Cleaning Guide/ Instruction Sheet
1	Contain Check List



90 LITER CHEMICAL SPILL KIT [SpillKlean-90-HZE-214BK]

- Absorbs Oil, Water, Acids and Bases.
- 214 Liters Blue Drum with Black Cover (Painting to Black) are UV Stabilizers, Chemicals and water resistance.



Quantity	Content
1	214 Liter Drum (Painting to Black) with Black Cover, Metal Gripper and Spill Kit Label
70	400Gsm Absorbent Pads (48cm x 43cm)
1	SpillKlean™ Universal Organic Absorbent
1	General Purpose Degreaser (1 Liter)
5	Hazardous Material Bag with Cable-Tie
6	N95 Particulate Respirator
3	Disposable Coverall
3	Chemical Goggle (Anti-Fog)
3	Neoprene Glove (13" Length)
3	Wellington Boots (Injection PVC)
1	Plastic Dust Pan with Brush Set
1	20 Liter Bucket with Cover
1	Spill Cleaning Guide/ Instruction Sheet
1	Contain Check List

25 UNIVERSAL ORGANIC ABSORBENT [SpillKlean-25]

- Universal Organic Absorbent that highly effective coir absorbents, that can used on broad range of hazardous and non-hazardous spills including:
 - ✓ Fuels (Petrol, Diesel, AV Gas)
 - ✓ Mineral, Vegetable Lubricants
 - ✓ Cutting Fluids
 - ✓ Cooking Oils.
 - ✓ Solvents
 - ✓ Pesticides & Herbicides
 - ✓ Mild corrosives (Acids & Caustics).
 - ✓ Liquid Organic waste.
- **FEATURES:**
 - ✓ Lower response time
 - ✓ Contains no harmful dust
 - ✓ Contains no chemicals or pesticides
 - ✓ Biodegradable –can be composted
 - ✓ Lightweight and spreads easily
 - ✓ Versatile, safe & effective for all types of Hydrocarbon spills.
 - ✓ Workplace and environment safe.



HAND, EYE & CLOTHING PROTECTION and WASTE COLLECTION EQUIPMENT

P/N	Description
CG-AF	Chemical Goggles (Anti-Fog)
SF-NIT15	Nitrile Glove -13"
SF-NEO	Neoprene Glove -13"
DC-XL	Disposable Coverall
BRM	Hard Bristle Yard Broom
HSH	Spark proof Shovel



HAZARDOUS MATERIAL DISPOSABLE BAG [SpillKlean-HMB2432]

- To disposing used absorbents, excluded solvent-contaminated wipes.
- Make from HDPE with "HAZARDOUS MATERIAL, HANDLE WITH CARE" message, you'll never worry about breakages or blowouts.
- Size: 24"(W) x 30"(H) x 0.1mm (Thickness)
- Standard Packing: 25pcs/ Bag

HEAVY DUTY SPILL KIT TOP COVER [SpillKlean-120/240-TARP]

- Protect spill kit contents in all weather conditions.
- With message "Please Do Not Throw Rubbish Here" to avoid misused
- Make from Heavy Duty Nylon Canvas with elastic band.
- Color: Yellow

P/N	Description
SpillKlean-120-TARP	For 120 Liter Spill Kit
SpillKlean-240-TARP	For 240 Liter Spill Kit



NON-WOVEN TRADE WIPES LAX 60 [LAX60B150]

- Industrial multi-purpose wipes.
- Very strong material
- Low-Linting, High absorbent
- Can be used with solvents and cleaning agents
- Cost-in-use savings over rags
- Portable and pop-up box
- Perfect as white cotton rag and mixed replacement
- Construction and manufacturing
- An excellent disposable towel for construction site kitchens
- Clean up oils, lubricants and water spills
- Sheet size: 30cm x 50cm
- Color: white
- Standard packing: 150 sheet/ 1 case



NON-WOVEN TRADE WIPES MAX 110 [MAX110B160]

- 110Gsm non-woven Heavy duty Industrial wipes.
- Ultra high water and oil absorbency & Ultra high tensile and abrasion resistance
- Bio-Degradable
- Leaves no lint after wiping
- For rugged surface wiping including metal shavings
- Working with solvents
- Where higher wet strength is required
- Suitable for engineering workshops, garages, manufacturing, mobile workers.
- Single ply pop-up box
- Sheet size: 30cm x 42cm
- Color: Blue
- Standard packing: 160 sheet/ 1 case



ROUGH & SMOOTH WET TRADE WIPES [DGPC80]

- Pre-moistened so need for water
- Dual-sided with micro-beaded side for agitating grime, smooth side for wiping way.
- High strength for use on rougher surfaces
- Skin-patch tested as safe to use on skin
- Contains aloe vera for keeping hands moisturized
- Conforms with EC1223/2009 Cosmetic Directive
- Use on hands, tools machinery and most surfaces
- Mobile workers, construction trade, engineering
- Fast removal of semi-curved silicone sealant and decorators' caulk. Oils and Grease. Adhesives, water base paints, inks, expanding foam & Dirt and grime



Due to the diverse range of substances found in laboratories, our kits feature the most universally compatible absorbent material available. Designed to accommodate a wide array of substances, except for hydrofluoric acid, this absorbent ensures versatility and effectiveness in managing spills across various laboratory settings.

BIOHAZARD SPILL KIT

[SpillKlean-BHS]

- There are many dangers when dealing with body fluids as they may be highly infectious. The Biohazard Spill Kit is suitable to use with all body fluids including blood, urine and vomit and contains all of the personal protection equipment to minimize the risk of infection occurring during the spill clean up.

- 1 500ml Bio-Hazard Absorbent Powder
- 1 100ml Bottle Clinical Detergent
- 1 Face Mask & Eye Shield
- 1 Scoop and Scraper
- 1 Disposable Gloves
- 1 LDPE Disposable Apron
- 2 Clinical Waste Bags & Ties
- 1 Hygienic Skin Wipes



CYTOTOXIC BODY FLUID SPILL KIT

[SpillKlean-CNK]

- This cytotoxic body fluid spill kit is designed to deal with spills of body fluid from patients undergoing cytotoxic drug therapy.
- The polymer impregnated absorbent pad can absorb up to 500ml of liquid and absorbent polymer powder can be used on liquid and semi-solid spills.
- The conversion from a liquid hazard into an easily managed solidified gel takes under 5 minutes.
- This spill kit comes complete with warning signs, instructions, cytotoxic disposal bags and basic personal protection equipment.



- 1 Body Fluid Solidifying Polymer
- 1 Polymer Impregnated Absorbent Pad
- 5 Absorbent Sheet
- 1 Facemask & Eye shield
- 1 Protective Disposable Gown
- 2 Disposable Gloves (Pair)
- 1 Labelled 10L Pail
- 1 Scoop and Scraper
- 2 Cytotoxic Waste Bag
- 1 Clinical Detergent - 100ml
- 1 Overshoes and Hairnet (Pair)
- 1 "Caution Spill" Sign

VOMBOX VOMIT CLEANUP KIT

[SpillKlean-VBX]

- Body fluid can contain pathogens such as hepatitis and HIV. It is critical to ensure that you are wearing the correct PPE when addressing body fluid spills. As well as all required PPE, the VomBox contains a fast-acting powder to absorb liquids and odors instantly. It is suitable to use with all body fluids including vomit, blood and urine.

- 1 10L Body Fluid Clean-Up Powder
- 1 Resealable Container
- 1 PPE/ Spill Clean Up Pouch
- 3 Disposable Apron
- 3 Scoop and Scraper
- 3 Facemask/ Eye shield
- 3 Disposable Glove (Pair)
- 3 Hygienic Skin Wipes
- 3 Clinical Waste Bags & Ties
- 1 Clinical Detergent 200ml
- 1 Instruction Sheet



FORMALIN SPILL RESPONSE KIT

[SpillKlean-FNK]

- This spill response kit is designed to deal with spills of dilute aqueous solutions of formaldehyde (formalin).
- The super absorbent neutralizing polymer contained in this kit cools the solution and reduces formaldehyde concentration.
- The conversion from a liquid hazard into an easily managed solidified gel takes approximately 5 minutes.



- 1 Formalin Neutralizing Absorbent Polymer
- 1 Fluid Solidifying Polymer
- 5 Absorbent Sheet.
- 2 Facemask & Eye Shield
- 1 Protective Disposable Apron.
- 1 Disposable Nitrile Gloves.
- 1 Labelled 10L Pail
- 1 Scoop and Scraper.
- 2 Clinical Waste Bag.
- 1 Overshoes and Hairnet.
- 1 "Caution Spill" Sign
- 1 Instruction Sheet

LABORATORY NEUTRALIZE SPILL KIT [SpillKlean-LNK]

- The acid and alkali neutralizing polymers undergo a color change to indicate that pH of the substance has moved towards neutral.
- The multi-purpose absorbent powder is suitable for Class 6, Class 3 and biohazard absorption.
- Not suitable for hydrofluoric acid.

- 1 Acid Neutralising Absorbent Polymer.
- 1 Alkali Neutralising Absorbent Polymer.
- 1 Multi-Purpose Absorbent Powder.
- 2 Protective Disposable Apron.
- 5 Absorbent Sheet.
- 2 Facemask and Eye shield.
- 2 Disposable Gloves.
- 1 Labelled 10L Pail.
- 1 Scoop and Scraper.
- 2 Clinical Waste Bags.
- 2 Overshoes and Hairnet.
- 2 "Caution Spill" Sign.
- 1 Instruction Sheet.



ALKALI SPILL RESPONSE KIT [SpillKlean-BNK]



- 1 Alkali Neutralising Absorbent Polymer
- 5 Absorbent Sheets
- 2 Facemask and Eye shield
- 2 Protective Disposable Apron
- 2 Disposable Nitrile Gloves (Pair)
- 1 Labelled 10L Pail
- 1 Scoop and Scraper
- 2 Clinical Waste Bags
- 1 Overshoe and Hairnet
- 2 "Caution Spill" Sign
- 1 Instruction Sheet

ACID SPILL RESPONSE KIT [SpillKlean-ANK]

- This acid spill response kit is designed to deal with a wide variety of acidic liquids.
- The super absorbent neutralizing polymer contained in this kit changes color to indicate it has come in contact with an acidic substance.
- The secondary color change indicates that the spilled substance has been neutralized and converted into a form that is solid enough to safely and easily collect for disposal.

- 1 Acid Neutralising Absorbent Polymer
- 5 Absorbent Sheet
- 2 Face Mask and Eyeshield
- 2 Protective Disposable Apron
- 2 Disposable Nitrile Gloves (Pair)
- 1 Labelled 10L Pail
- 1 Scoop and Scraper
- 2 Clinical Waste Bags
- 2 Overshoes and Hairnet (Pair)
- 2 "Caution Spill" Sign
- 1 Instruction Sheet



MERCURY SPILL RESPONSE KIT [SpillKlean-MEK-C]

- This kit features Green-Z® solidifier to contain a mercury spill.
- Simply pour Green-Z® around the spill and activate it with the absorbent activator.
- Carefully scoop the contained mercury into the disposal bag and seal.



- 3 Nitrile Gloves (Pair)
- 1 Safety Shield
- 2 Green-Z® Solidifier (21g Pouch).
- 2 Scoop & Scraper
- 1 Wiper Pad
- 1 Bottle Absorbent Activator (4oz Bottle)
- 1 Zip Lock Bag
- 1 White Disposal Bag (7½" x 10½")
- 1 Twist Tie
- 1 Instruction Sheet.

GREEN-Z® SPILL CONTROL SOLIDIFIER

- Chlorine-Free Formula
- At times, workers may be unintentionally exposed to blood and bodily fluid spills along with other harmful substances such as toxic chemicals, biological hazards, and chemotherapy agents. To reduce those exposure risks, rely on Green-Z® for improved safety in your spill clean-up operations.
- Contains fast-acting, super absorbent polymers. Chlorine-free (safe for use on chemotherapy, glutaraldehyde and mercury spills)
- Eliminates splashing by solidifying and turning spills into semi-solid (gel) mass.
- Cost-effective clean-up solution.

P/N	Description
42019	Green-Z® 21g Single-Use Pouch 100/Case
42010	Green-Z® 5oz Shaker Top Bottle 24/ Case
42012	Green-Z® 15 oz. Shaker Top Bottle 12/ Case



ALKY SOLIDIFIER (ALKALINE)

- Rapidly neutralizes & solidifies high pH spills
- Ammonium Hydroxide, Potassium Hydroxide, Sodium Hydroxide
- Sprinkle ALKY directly onto the spill, covering it completely. The spill will turn blue, then yellow when it is safely neutralized. Once it becomes a semi-solid gel, it is ready for clean-up with a scoop and scraper.



P/N	Description
BNP142	ALKY Neutralising Absorbent Polymer Shaker Top Bottle – 142G
BNP425	ALKY Neutralising Absorbent Polymer Shaker Top Bottle – 425G
BNP425/12	ALKY Neutralising Absorbent Polymer Shaker Top Bottle – 425G/12

ALKY SOLIDIFIER (ALKALINE)

- Rapidly neutralizes & solidifies low pH spills
- Acetic Acid, Nitric Acid, Hydrochloric Acid, Sulfuric Acid
- Sprinkle Acid Lock directly onto the spill, covering it completely. The spill will turn Pink, then yellow when it is safely neutralized. Once it becomes a semi-solid gel, it is ready for clean-up with a scoop and scraper.

P/N	Description
ANP142	Acid Neutralising Absorbent Polymer Shaker Top Bottle – 142G
ANP425	Acid Neutralising Absorbent Polymer Shaker Top Bottle – 425G
ANP425/12	Acid Neutralising Absorbent Polymer Shaker Top Bottle – 425G/12





PREMIUM, ECONOMY & ESSENTIAL SHOWER EYE/FACE WASH
EMERGENCY TANK SHOWERS FOR ANY APPLICATION
MOBILE INTERIM SELF-CONTAINED SHOWER & EYEWASH
DECONTAMINATION SHOWER
SELF-CONTAINED GRAVITY FEED EYEWASH
WATER PRESERVATIVE CONCENTRATE
TOBIN EYEWASH SYSTEM



EMERGENCY COMBINATION SAFETY SHOWER WITH EYE/ FACE WASH – PREMIUM RANGE [EXP18GS85G]

- This floor mounted emergency safety shower constructed Marine 316 Stainless steel, complete with an integrated eye/ face wash unit, adheres to ANSI standards.
- Tailored for environments with moderate ambient temperatures and it offers a dependable safety solution for various industrial settings.
- The stocked Model is Versatile and allows for Top or Mid-Level water inlet at 1 1/4" BSP Female
- Please refer to page 4 - 5 for optional accessories.

Specifications:-

Operating Pressure	2 to 6 Bar (29 to 87psi) – Higher supply pressures accommodated with the incorporation of the optional pressure reducing valve
Minimum Flow Rates	Shower: 76 Liter/ Minute (20 Gallon/ Minute) Eye Wash: 12 Liter/ Minute (3 Gallon/ Minute)
Ambient Operating Temperature	Minimum 5°C (41°F) Maximum 35°C (95°F)

SELF-DRAINING EMERGENCY COMBINATION SAFETY SHOWER WITH EYE/ FACE WASH – PREMIUM RANGE [EXPSD18GS85G]

- This floor mounted self-draining emergency safety shower constructed Marine 316 Stainless steel, complete with an integrated eye/ face wash unit, adheres to ANSI standards.
- Its innovative design facilitates the drainage of standing water away from the standpipe, ensuring the delivery of tepid water (16°C – 36°C).
- Positioned directly above the water inlet, the valve is accompanied by a bleed pipe to enable the drainage of standing water into the ground, preventing the formation of stagnant water and potential overheating from solar radiation.
- This design mitigates the risk of further injury to the operator.
- Additionally, this unit is suitable for applications exposed to ambient temperatures of up to 45°C in direct sunlight.
- The stocked Model bottom water inlet at 1 1/4" BSP Female
- Please refer to page 4 - 5 for optional accessories.

Specifications:-

Operating Pressure	2 to 6 Bar (29 to 87psi) – Higher supply pressures accommodated with the incorporation of the optional pressure reducing valve
Minimum Flow Rates	Shower: 76 Liter/ Minute (20 Gallon/ Minute) Eye Wash: 12 Liter/ Minute (3 Gallon/ Minute)
Ambient Operating Temperature	Minimum 5°C (41°F) Maximum 55°C (131°F)





STD85G



STD85GSP

WALL MOUNTED [STD85G] & PEDESTAL MOUNTED EYE/ FACE WASH [STD85GSP] PREMIUM RANGE

- Open 316L Stainless Steel bowl, wall mounted emergency eye/ face wash featuring twin spray nozzles protected by dust covers.
- When activated via the push plate, the water jets lift off the dust covers.
- The eye wash diffusers are fitted with fine mesh strainers and individual flow controllers designed to give a gentle flow of aerated water.
- Unit is available Wall Mounted and Pedestal Mounted
- Please refer to page 4 - 5 for optional accessories.

Specifications:-

Operating Pressure	2 to 6 Bar (29 to 87psi)
Minimum Flow Rates	Eye Wash: 12 Liter/ Minute (3 Gallon/ Minute)
Ambient Operating Temperature	Minimum 5°C (41°F) Maximum 35°C (95°F)

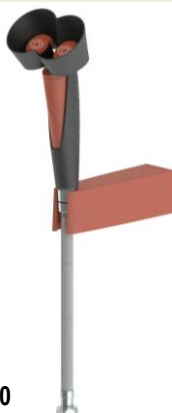
EMERGENCY HANDHELD EYE, FACE AND BODY WASH

- A range of wall or table mounted units, available with one or two nozzles, developed to suit hazardous environments where there is a risk of small spillages of chemicals or dangerous substances.
- The 1.5 meter of reinforced hose makes these handheld showers particularly useful for treating disabled personnel.
- The unique lock-on actuating button for ease of use meets European and international standards.
- Fitted with dust covers, a non-return valve and a built-in flow regulator.

Item Code	Description
OPTI100	Wall Mounted Single Cup Optiflex
OPTI500	Wall Mounted Dual Cup Optiflex
OPTI600	Bench Mounted Dual Cup Optiflex



OPTI100



OPTI500



OPTI600

ACCESSORIES FOR PREMIEM RANGE OF SAFETY SHOWERS & EYEWASH



FOOT TREADLE

Item Code	Description
TFC-G	G Range Foot Treadle for Premium Eyewash
KTFC	K Range Foot Treadle for Self-Draining Eyewash

RAISED/ FLAT FACE FLANGE – WATER INLET/ OUTLET

Item Code	Description
SD05010	1" 316L/ GALV ANSI/ ASME/ PN 150LB Raised/ Flat Flange at Water Inlet/ Outlet
SD05030	1¼" 316L/ GALV ANSI/ ASME/ PN 150LB Raised/ Flat Flange at Water Inlet/ Outlet
SD05040	1½" 316L/ Galv. ANSI/ ASME/ PN 150LB Raised/ Flat Flange at Water Inlet/ Outlet
SD05050	2" 316L/ Galv. ANSI/ ASME/ PN 150LB Raised/ Flat Flange at water Inlet/ Outlet

*** Others sizes are available on request.



STAINLESS STEEL SCALD PROTECTION VALVE



Item Code	Description
VL60001	½" BSP Female 316 Stainless Steel SCALD Protection Valve SP68-100 Valve Fully Open at 38°C & Fully Close at 32°C
VL60013	½" BSP Female 316 Stainless Steel Scald Protection Valve SP68-95 Valve Fully Open at 35°C & Fully Close at 29°C

*** Others sizes and temperature parameters available on request.

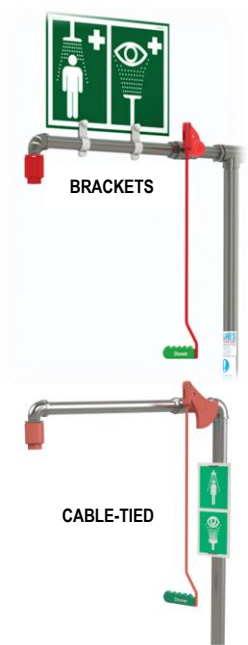
EUROSWITCH & PROXIMITY SWITCH

Item Code	Description
EC35147	1¼" BSP Euroswitch 316 Stainless Steel with terminal Box with M20 Cable Entry, SPDT with 1 N/C & 1N/O Volt Free Contacts
STD22KS – SS316	Low Inrush Proximity Switch, 24VDC, Suitable for Zone Non-Flameproof Area
STD22KS (2ND) –SS316	Low Inrush 2nd Proximity Switch, 24VDC, Complete with Brackets Suitable for Non-Flameproof Area
STD22KSZ12-SS316	Low Inrush Proximity Switch, 24VDC, Suitable for Zone 1 & 2 Area Gas Group 11a and 11b.
STD22KS (2ND) Z12-SS316	Low Inrush 2nd Proximity Switch, 24VDC, Suitable for Zone 1 & 2 Area Gas Group 11a and 11b.
STD22K	Brass Nickel Plated Low Inrush Proximity Switch, 24VDC, Suitable for Zone Non-Flameproof Area
STD22K(2ND)	Bass Nickel Plated Low Inrush 2nd Proximity Switch, 24VDC Complete with Brackets Suitable for Non-Flameproof Areas
STD22JZ12	Brass Nickel Plated Low Inrush Proximity Switch, 24VDC, Suitable for Zone 1 & 2 Areas Gas Groups 11a and 11b.
STD22K (2ND) Z12	Brass Nickel Plated Low Inrush 2nd Proximity Switch, 24VDC, Suitable for Zone 1 & 2 Areas Gas Groups 11a and 11b.

*** Others Configurations are available on request.



SIGNAGE FOR SAFETY SHOWER AND EYE/ FACE WASH



Item Code	Description
EWS	Eyewash Sign Metal 300 x 255mm Single Side Wall Mounted
SSS	Safety Shower Sign Metal 300 x 255mm Double Sided with Brackets
ESS	Safety Shower & Eyewash Sign Metal 300 x 400mm Double Sided Brackets
EWSP	Eyewash Sign Poly 140 x 140mm Single Side Wall Mounted/Cable Tied
SSSP	Safety Shower Sign Poly 140 x 140mm Single Side Wall Mounted/ Cable Tied
ESSP	Safety Shower/ Eyewash Sign Ply 280 x 140mm Single Side Wall Mounted/ Cable Tied



ECONOMY RANGE – COMBINATION SHOWER & EYE/ FACE WASH



Picture shown with optional eye/ face wash bowl (DA001) & Foot Treadle (DA003)

FLOOR MOUNTED 304 STAINLESS STEEL EMERGENCY COMBINATION SAFETY SHOWER WITH EYE/ FACE WASH UNIT WITH POLY SIGN AND GRP SPRAY NOZZLE – ECONOMY RANGE [D5017]

- This Economy Range of Safety Shower and Eye/ Face Wash, perfect for environments where freezing or overheating is not a concern.
- Engineered to deliver ANSI 358.1-2014 standard flow rates, ensuring a robust flow of 76 Liters per minute of potable water from the shower and 12 Liters per minute to the eye/ face wash.

Specifications:-

Operating Pressure	2 to 6 Bar (29 to 87psi)
Minimum Flow Rates	Shower: 76 Liter/ Minute (20 Gallon/ Minute) Eye Wash: 12 Liter/ Minute (3 Gallon/ Minute)
Ambient Operating Temperature	Minimum 5°C (41°F) Maximum 35°C (95°F)

OPTIONAL ACCESSORIES – ECONOMY RANGE

ITEM CODE	DESCRIPTION
DA001	Bowl & Drain Assembly for Stainless Steel Combination Safety Shower & Eye/ Face Wash suits to D5017
DA003	GRP Red Foot Control Panel Assembly for Eye/ Face Wash activation suits to D5016, D5017 and 5020
DA004	Additional Rose/ ABS shroud cover for drench shower suits to D5016, D5017 – GRP Spray Nozzle Remains





D5020



D5020CP

OPEN BOWL WALL MOUNTED 304 STAINLESS STEEL EYE/ FACE WASH [D5020] - ECONOMY RANGE

- The Economy Range of Eye/ Face wash is 304 Stainless Steel is wall mounted with an open bowl. This eye/ face wash with twin spray nozzles safeguarded by dust covers.
- Activated effortlessly via the push plate, these covers lift off to reveal the powerful yet gentle spray.
- With an inbuilt flow regulator valve ensuring optimal safety to the eyewash, water flow, you can trust in its reliability during emergencies. The eye wash diffusers, equipped with fine mesh strainers, deliver a gentle aerated flow of water at 12 Liter per minute, meeting ANSI 358.1-2014 standard.
- While primarily intended for indoor use, this unit is versatile enough for outdoor placement in areas free from overheating risks.

Specifications:-

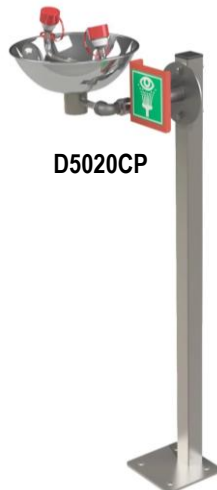
Operating Pressure	2 to 6 Bar (29 to 87psi)
Minimum Flow Rates	Eye Wash: 12 Liter/ Minute (3 Gallon/ Minute)
Ambient Operating Temperature	Minimum 5°C (41°F) Maximum 35°C (95°F)

OPTIONAL ACCESSORIES – PEDESTAL MOUNTING

ITEM CODE	DESCRIPTION
D5020CP	Open Bowl Wall Mounted 304 Stainless Steel Eye/ Face Wash complete with PP Sign and SS304 Pedestal
D5020CPG	Open Bowl Wall Mounted 304 Stainless Steel Eye/ Face Wash complete with PP Sign and SS304 Pedestal and GRP Pedestal
DA003	GRP Red Foot Control Panel Assembly for Eye/ Face Wash activation suits to D5016, D5017 and 5020



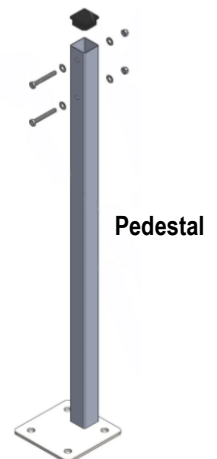
D5020



D5020CP



DA003



Pedestal



SHOWER TEST KIT [STK]

- To facilitate easy weekly testing of shower equipment, as required by the ANSI Z358.1-2014 standard, we recommend the use of a Shower Test Kit
- Water from the shower nozzle is directed into a container via the funnel, allowing maintenance personnel to measure the delivery of water whilst ensuring they and the floors are kept dry.
- The Shower Test Kit includes a white 10 Liters bucket to contain the water during testing, also allowing for water flow rates to be calculated by measuring the time taken for the bucket to be filled.

Specification

Funnel Material	600Gsm PVC Coated Fabric
Funnel Support Collar Material	PVC Pipe
Telescopic Handle Material	PVC Pipe
10L Container	Plastic Bucket Marked at 10 Liter
Funnel Dimension	Ø360 (Upper Opening) x Ø180 (Lower Opening) x 1980(Long)mm
10L Container Dimension	Ø260 (Diameter) x 280(Height)mm

SHOWER MODESTY CURTAIN [WPCR]

- Offers privacy to a casualty in situations where items of clothing must be removed.
- The curtain also prevents water and contaminants from splashing the immediate area around the safety shower.
- The opaque PU coated nylon curtain is attached to a circular shaped stainless steel rail to ensure the user is completely concealed for maximum privacy.

Specification

Curtain Rail & Mounting Brackets Material	Stainless Steel
Curtain Material	PU Nylon
H-WPCR	Ø1.2 (Diameter) x 2 (Length) Meter



EMERGENCY TANK SHOWERS FOR ANY APPLICATION

Galvanized Pre-insulated Outdoor Tank Shower [EXPJ14K1500]

Stainless Steel Pre-insulated Outdoor Tank Shower [EXPJ14KS1500]

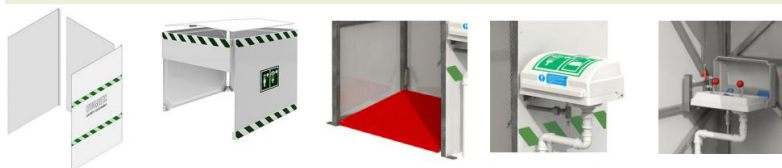
- Insulated emergency tank shower with eye/ face wash unit, for use in hazardous and non-hazardous hot climates.
- Designed to meet and exceed ANSI standards by providing tepid water for over 15 minutes at a guaranteed flow of 76 Liters per minute, even when there is no mains water supply.
- Available with galvanized mild steel or stainless-steel frame.
- Selecting the right safety shower for your site can be a complex task. With challenges such as remote locations, extreme temperatures, low water pressure or no reliable water supply, a simple tubular shower isn't always the right fit.
- From oil rigs to water treatment sites, petrochemical plants to mining facilities, emergency tank showers are the ideal solution.
- Self-contained and resilient, emergency tank showers are often the simplest and most comprehensive way to stay compliant.
- Manufacturing at HUGHES UK, the emergency tank showers are built a proven design and have a long life. We're also proud to have been awarded the ISO 9001:2015 certification, an internationally recognized standard that ensures our services meet the needs of clients through an effective quality management system.
- EN15154 and ANSI Z358.1-2014 Compliant.



Specifications:-

GRP Panelling to 3 Sides	Temperature Indicator Ø4"
Sun Shields – Set	Immersion Heater - FLP
Sump Frame & Foot Grating	Immersion Heater – Non FLP
Shower Panel Foot Control	Chiller Unit – FLP
Eye Wash Treadle Foot Control	Chiller Unit – NON FLP
Eye/ Face Wash	Light – FLP
Pointer Level Indicator	Light – Non FLP

- Ensure continuous water supply delivering 76 Liters per minute for 15 minutes (Section 4.1.2, 4.5.5)
- Deliver tepid water (16°C – 38°C) to prevent thermal shock and ensure casualties can use the shower for the full duration. (Section 4.1.3, 4.5.4)
- Installed so the shower head is between 208-244cm from the floor (Section 4.1.3, 4.5.4)
- Safety showers must be located within 10 seconds/ 15 Meters of a potential hazard (Section 4.5.2)
- Safety showers must be located on the same level as the hazard and path should be free of obstructions. Any doors that have to be negotiated must not have a lock and must open in the direction of travel towards the shower (Section 4.5.2).
- The unit should be well lit and identified with a highly visible sign (Section 4.6.2).
- All units to be activated weekly to flush the line and verify proper operation and ensure flushing fluid is available (Section 4.6.5)
- All units must be inspected annually to assure conformance to above standard (Section 4.6.5).
- Stay-Open valve (hands free) activates in one second or less (Section 4.1.5, 4.2)
- Eye wash heads positioned between 84-135cm from the floor (Section 5.4.4, 6.4.4)
- Combination unit components shall be positioned so that the components may be used simultaneously by the same user (Section 7.4.4)
- All employees who may be subject to exposure to hazardous materials must be trained in the use and also the locations of the unit (Section 4.6.4).



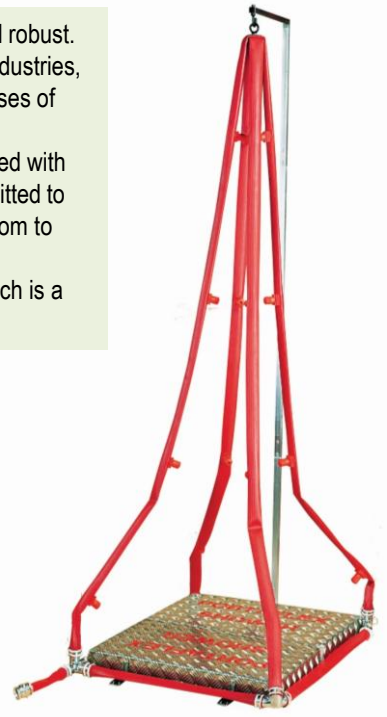


MOBILE INTERIM 114 LITERS SELF-CONTAINED SAFETY SHOWER AND EYEWASH [STD40K45G]

- An essential additional to sites where a stationary safety shower and eye wash is unsuitable, for stand-by use in locations where no water supply is available, or when existing safety showers are undergoing maintenance.
- Designed to supplement permanent plumbed-in models, the 114 Liters unit is easy to manoeuvre as the location of the hazard changes during a project.
- This unheated model incorporates a polypropylene lined cylinder, heavy duty powder coated stainless steel frame and large pneumatic tyres to aid mobility.

DECONTAMINATING SHOWERS 16 NOZZLE [30016E]

- 16 nozzle portable decontamination shower designed to be both lightweight and robust.
- Ideal for use by Civil and Military Fire Services, Chemical and Petrochemical Industries, Armed Services and Civil Defence Units, the unit can be quickly deployed in cases of major chemical, biological and nuclear incident in less than a minute.
- The 11" lay-flat Red Dura-line hoses form four shower legs, each of which is fitted with four spray nozzles. Once erected and coupled to a free appliance, water is admitted to the apparatus and the hoses become rigid under pressure, adopting a curved form to give 360° decontamination.
- The rugged carrying case duals as an effective base platform, the design of which is a lay-flat host assembly, complete with non-slip raised platform.



FLOOR MOUNTED COMBINATION SHOWER & EYEWASH

- Emergency Shower and Eyewash are necessary in chemical explore workplace in line with OSHA Rules and Regulation where chemical hazard.
- Every effort must be made to save sight and skin to alleviate suffering in the event of included chemical hazards.
- All control ball valve are the instant action & stay opened for chemical decontamination instantly.
- This series are come with Foot Pedal as additional devices to activated eyewash.
- Stainless steel with ABS spray heads assembly with twin, soft-flow eyewash heads and instant flip-open protective dust-cover. With built in automatic pressure compensating valve to assures safe and steady flow under varying water supply conditions. Eyewash spray head are included with a filter to protect against particles from the water flow which may damaging to the eyes and face.

Specifications/ Item Code	SF-ES01-SS-F	SF-ES01-AB-F
Operating Pressure	Min. 45Psi (3 Bar) & Max. 80Psi (5 Bar)	
Ambient & Operating Temperature	Min. 5°C & Max. 35°C	
Shower Control Valve	1¼" Fast-Action Stainless Steel Ball Valve with Pull Rod	
Eyewash Control Valve	½" Stainless Steel Ball Valve and Foot Pedal	
Pipe & Fitting Material & Color	1¼" Stainless Steel pipe with epoxy powder coated to highly visible safety yellow	
Water Supply & Waste Water Connection	1¼" BSP Female Thread	
Pedestal	Ø250mm (10") Aluminum Pedestal with 3 mounting holes for 9mm Bolts	
Certified to	ANSI Z358.1-2004	
Signage	Drench Shower & Eyewash	
Shower Bowl Material	Ø280mm (11") Matted Stainless Steel	Ø280mm (11") ABS Plastic – Chemical Resistance
Eyewash Bowl Material	Ø280mm (11") Matted Stainless Steel	Ø280mm (11") ABS Plastic – Chemical Resistance



VERTICALLY MOUNTED SHOWER

- Vertical Mounted Shower effectively drenches the body with large quantity of water.
- Easy to operated/ activation with pull downward triangle handle.

Specifications/ Item Code	SF-S01-SS	SF-S01-AB
Operating Pressure	Min. 45Psi (3 Bar) & Max. 80Psi (5 Bar)	
Ambient & Operating Temperature	Min. 5°C & Max. 35°C	
Shower Control Valve	1¼" Fast-Action Stainless Steel Ball Valve with Pull Rod	
Pipe & Fitting Material & Color	1¼" Stainless Steel pipe with epoxy powder coated to highly visible safety yellow	
Water Supply	1¼" BSP Female Thread	
Certified to	ANSI Z358.1-2004	
Signage	Shower	
Eyewash Bowl Material	Ø280mm (11") Matted Stainless Steel	Ø280mm (11") ABS Plastic – Chemical Resistance



**VERTICALLY MOUNTED SHOWER -
STAINLESS STEEL BOWL
[SF-S01-SS]**



**VERTICALLY MOUNTED SHOWER -
ABS PLASTIC BOWL
[SF-S01-AB]**

HORIZONTALLY MOUNTED SHOWER

- Horizontally Mounted Shower unit gives an outstanding performance of showers.
- Easy to operated/ activation with pull downward triangle handle.

Specifications/ Item Code	SF-S02-SS	SF-S02-AB
Operating Pressure	Min. 45Psi (3 Bar) & Max. 80Psi (5 Bar)	
Ambient & Operating Temperature	Min. 5°C & Max. 35°C	
Shower Control Valve	1¼" Fast-Action Stainless Steel Ball Valve with Pull Rod	
Pipe & Fitting Material & Color	1¼" Stainless Steel pipe with epoxy powder coated to highly visible safety yellow	
Water Supply	1¼" BSP Female Thread	
Certified to	ANSI Z358.1-2004	
Signage	Shower	
Eyewash Bowl Material	Ø280mm (11") Matted Stainless Steel	Ø280mm (11") ABS Plastic – Chemical Resistance



**HORIZONTALLY MOUNTED SHOWER
- STAINLESS STEEL BOWL
[SF-S02-SS]**



**HORIZONTALLY MOUNTED SHOWER
- ABS PLASTIC BOWL
[SF-S02-AB]**

WALL MOUNTED EYEWASH

- Where space may be of constraint, wall-mounted eyewash fits easily into your work place.
- Eyewash activation quickly with a simple push of its highly visible push plate.
- Control ball valve are the instant action & stay opened for gentle water flow
- Stainless steel with ABS spray heads assembly with twin, soft-flow eyewash heads and instant flip-open protective dust-cover. With built in automatic pressure compensating valve to assures safe and steady flow under varying water supply conditions. Eyewash spray head are included with a filter to protect against particles from the water flow which may damaging to the eyes and face.

Specifications/ Item Code	SF-E01-SS	SF-E01-AB
Operating Pressure	Min. 45Psi (3 Bar) & Max. 80Psi (5 Bar)	
Ambient & Operating Temperature	Min. 5°C & Max. 35°C	
Eyewash Control Valve	½" Stainless Steel Ball Valve	
Pipe & Fitting Material & Color	½" Stainless Steel pipe with epoxy powder coated to highly visible safety yellow	
Water Supply	½" BSP Female Thread	
Waste Water Connection	1¼" BSP Female Thread	
Wall Mount Bracket	Aluminum Bracket with 3 mounting holes	
Certified to	ANSI Z358.1-2004	
Signage	Eyewash	
Eyewash Bowl Material	Ø280mm (11") Matted Stainless Steel	Ø280mm (11") ABS Plastic – Chemical Resistance



**WALL MOUNTED EYEWASH -
STAINLESS STEEL BOWL
[SF-E01-SS]**



**WALL MOUNTED EYEWASH –
ABS PLASTIC BOWL
[SF-E01-AB]**

FLOOR MOUNTED EYEWASH – WITH FOOT PEDAL

- Eyewash activation quickly with a simple push of its highly visible push plate and by foot pedal
- Control ball valve are the instant action & stay opened for gentle water flow
- Stainless steel with ABS spray heads assembly with twin, soft-flow eyewash heads and instant flip-open protective dust-cover. With built in automatic pressure compensating valve to assures safe and steady flow under varying water supply conditions. Eyewash spray head are included with a filter to protect against particles from the water flow which may damaging to the eyes and face.

Specifications/ Item Code	SF-E02-SS-F	SF-E02-AB-F
Operating Pressure	Min. 45Psi (3 Bar) & Max. 80Psi (5 Bar)	
Ambient & Operating Temperature	Min. 5°C & Max. 35°C	
Eyewash Control Valve	½" Stainless Steel Ball Valve	
Pipe & Fitting Material & Color	½" Stainless Steel pipe with epoxy powder coated to highly visible safety yellow	
Water Supply	½" BSP Female Thread	
Waste Water Connection	1¼" BSP Female Thread	
Pedestal	Ø250mm (10") Aluminum Pedestal with 3 mounting holes for 9mm Bolts	
Certified to	ANSI Z358.1-2004	
Signage	Eyewash	
Eyewash Bowl Material	Ø280mm (11") Matted Stainless Steel	Ø280mm (11") ABS Plastic – Chemical Resistance



**FLOOR MOUNTED EYEWASH -
STAINLESS STEEL BOWL
[SF-E02-SS-F]**



**FLOOR MOUNTED EYEWASH -
ABS PLASTIC BOWL
[SF-E02-AB-F]**





**ABS PLASTIC
SHOWER BOWL - 1 1/4"**



**ABS PLASTIC
EYEWASH BOWL - 1 1/4"**



**STAINLESS STEEL
SHOWER BOWL - 1 1/4"**



**STAINLESS STEEL
EYEWASH BOWL**



**EYEWASH HEAD
ASSEMBLY**



**EYEWASH FLIP-OPEN
SPRAY HEAD SET**



**STAINLESS STEEL
EYEWASH
PUSH PLATE**



**1 1/4" SHOWER BALL
VALVE WITH LEVER**



**SHOWER STAINLESS
STEEL PULL ROD**



**FOOT PEDAL WITH
STAINLESS STEEL CHAIN**



**SHOWER & EYEWASH
SIGN**

EMERGENCY RESPONSE PORTABLE EYEWASH

SELF-CONTAINED GRAVITY FEED EYEWASH

- Wall or bench mounted, self-contained eyewash unit providing continuously 15 minutes of water flow
- Emergency First-Aid water treatment for work sites without plumbing capabilities
- Large filling cap make easy on filling, cleaning and inspection whilst the retractable tray protects against air borne contaminants
- High visibility color provides quicker identification for a casualty in distress
- Meets ANSI and EN standards
- Test weekly for compliance of ANZI Z358.1-2014.
- Water Preservative Concentrate [ANTBAC 100] are optional for 30-100 Liters of portable water for up to 3 months

Materials of Construction	P400	P401
Main Body and Pull Down	High Density Polyethylene (HDPE)	
Wall Bracket	Galvanized Mild Steel	
Numbers of Nozzles & Material	2 Nozzle & Polypropylene	
Color	Green & Orange	Yellow & Green
Water Capacity (Liters)	34 Liters	81 Liters
Minimum Flow (Liters/ Minute)	1.5 Liters/ Minute (0.4 Gallon) & P401 Exceeds	
Minimum Ambient Operating Temperature (°C)	5°C (41°F)	
Maximum Ambient Operating Temperature (°C)	35°C (95°F)	
Eye/ Face Wash Activation	Pull Down Tray for Activation	
Packing Dimensions (W x D x H)mm	580 x 250 x 400mm	610 x 610 x 660mm
Weight (Kg) - Packing	5Kg	10Kg



P400



P401



WATER PRESERVATIVE CONCENTRATE [ANTBAC-100]



- One 250ml bottle of ANTBAC Water Preservative Concentrate is designed to maintain from 30 to 100 Liters of portable water for up to 3 months.
- 1 Case of 4 bottle provide a 1-Year supply and offer a 36-Month shelf life when stored below 30°C
- ANTBAC is specifically designed to be used with Self-Contained Eyewash station or products with a capacity of 30 to 100 Liters of water
- The water used to fill the self-contained products must be potable before adding the solution
- If you require a large amount of water to be preserved, please do contact us with your requirements

Item Code	Description	Packing Dimension & Weight (Kg)
ANTBAC-100	Water Preservative Concentrate – 250ml x 1 Bottle	Ø60 x 110mm & 0.26Kg/ Bottle
ANTBAC100/4	Water Preservative Concentrate – 250ml x 4 Bottle/ Case	135(L) x 135(W) x 135(H)mm & 1.2Kg/ Case

TOBIN EYEWASH SYSTEM – SALINE SOLUTION

- Industrial Eyewash – Saline Solution
- An eyewash should be quick, simple and safe to use
- The unique shape of TOBIN's eyewash bottle insures that even a temporarily blinded and confused person can identify it as a safe eyewash
- TOBIN'S EYEWASH SYSTEMS are a well proven, quick and safe way to wash chemicals from the eyes.
- This specially designed system gives the fastest possible application combined with a volume large enough for most eye accidents

Item Code	Product Name (Saline Solution)	Capacity (ML)	Dimension (mm)	Weight (Kg)
TOB121	Pocket Eyewash Flask	1 x 200ml	35 x 85 x 180mm	0.24
TOB124	Stationary Stand Wall Mount	5 x 1000ml	456 x 375 x 115mm	7
TOB126	2 x Replacement Bottles	2 x 1000ml	210 x 375 x 115mm	2.4
TOB127	Transport Stand Wall And Bench Mount	2 x 1000ml	210 x 375 x 115mm	2.8
TOB128	5 x Replacement Bottles	5 x 1000ml	456 x 375 x 115mm	6
TOB129	Stationary Stand Wall Mount	2 x 1000ml	210 x 375 x 115mm	2.8
TOB130	Dust Protected Cabinet Wall Mount	2 x 1000ml	260 x 385 x 115mm	3.5



TOB121



TOB124



TOB128



TOB129



TOB127



TOB126



TOB130

TOBIN EYEWASH SYSTEM – BORATE BUFFERED SOLUTION

- TOBIN Borate Buffered Solution for Strong Buffering Effect Against Alkaline Solutions

Item Code	Product Name (Saline Solution)	Capacity (ML)	Dimension (mm)	Weight (Kg)
TOB431	Dust Protected Cabinet Wall Mount	2 x 1000ml	260 x 385 x 115mm	2.4
TOB425	Transport Stand Wall And Bench Mount	2 x 1000ml	210 x 375 x 115mm	2.8
TOB426	2 x Replacement Bottles	2 x 1000ml	210 x 375 x 115mm	2.4
TOB429	Stationary Stand Wall Mount	2 x 1000ml	210 x 375 x 115mm	2.8



TOB425



TOB429



TOB431



TOB426

INSTRUCTION FOR USE TOBIN EYEWASH

- WITHIN ARMS REACH** Chemicals in the eye causes serious damage within 1-5 seconds. Washing that begins in a few seconds can be decisive in minimizing eye damage. A temporarily blinded person trying to reach an eyewash a few meters away requires presence of mind, a good sense of direction and obstacle free passage. An eyewash should be within arms reach. The bottle are also very easy to open.
- CONTROLLED FLOW** According to Prof. Tengroth at the Eye Clinic at ST. Eriks Hospital in Stockholm, it is important that damaged eyes are washed by a soft flow. Tobin's bottle is constructed to empty under natural pressure giving a soft flow. When the bottom air vent is opened a patient cannot increase the flow by squeezing the bottle. A bottle gives approx. 3 minutes washing time.
- SHELF LIFE** As the bottles are disposable, costly refill routines are unnecessary. The contents of the bottle have a 3-year shelf life. Each bottle has an expiry date clearly visible.
- VOLUME** Uninterrupted washing over a period is particularly important. The 5-bottle stand gives approximately 15 minutes washing. Further bottles can be taken from other stands if required.
- TRANSPORT** Bottles can easily be removed from the stand and taken along during transportation to the doctor. It is very easy to open the bottles by hand. It is possible to control the flow by placing the thumb over the bottom hole.
- DUST COVERS** A simple plastic bag accompanies each bottle. It keeps the bottles clean in dusty/dirty environments.
- LOW PRICE** The cost of the wall-stand with 5 bottles is low, making it possible to give each danger spot its own eyewash station.
- STERILITY** The regulation governing sterile liquids is rigorous. The bottle cannot contain any bacteria during its shelf life. When a bottle is opened the contents must be used within a few hours or thrown away. Bottles cannot be refilled and as such are designed to stop people saving unused liquid or refilling the bottle with other liquid. Open bottles cannot be replaced in a stand.
- EASY TO OPEN** The bottles are easy to open as is illustrated on each individual bottle and on most stands.



POLYETHYLENE CHEMICAL COMPATIBILITY GUIDE - SPILL PALLET

Acetaldehyde 40%	Butanol	Fluosilicic Acid	Methyl Amine 32%	Selenic Acid
Acetamide	Butyl Acetate	Formaldehyde 40%	Methyl Sulphate	Silicic Acid
Acetic Acid 10%	Butyl Alcohol	Formamide	Methyl Sulphuric Acid	Silver Nitrate
Acetone	Butylene Glycol	Formic Acid	Monochloroacetic Acid Ethyl Ester	Sodium Acetate Sat.sol
Acrylonitrile	Butyric Acid	Fruit Pulp Sol	Monnchloroacetic Acid Methyl Ester	Soudium Acrylates
Adipic Acid	Calcium Carbonate Sat. sol	Furfural	Morpholin	Sodium Benzoate
Aliphatic Hydrocarbons	Calcium Chloride	Gallic Acid Sat. so	Mowilith D	Sodium Bicarbonate
Allyl Alcohol 96%	Calcium Hydroxide	Gloconic Acid	Muriatic Acid	Sodium Bisulphate Sat.col
Alum (aqu.sol)	Calcium Hypochlorite sol	Glycerine	Nickel Chloride sat.so	Sodium Bisulphite
Aluminum Chloride sat. sol	Calcium Nitrate 50%	Glycol	Nicotine Dilute	Sodium Bromide
Aluminium Fluoride	Calcium Sulphate sat. sol	Glycol Ethers	Nicotinic Acid	Sodium Carbonate
Aluminum Hydrogen sol 10%	Carbonic Acid (Ag.Co ²)	Glycolic Acid	Nitric Acid 25%	Sodium Chlorate
Aluminium Hydroxide	Carbon Monoxide	Heptane	N-Octane	Sodium Chloride
Aluminum Sulphate sat. sol	Caustic (Aqueous)	Hexane	Octyl Cresol	Sodium Chromate
Ammonia (Anhydrous)	Caustic Potash Sol. 50%	Hexanel Tert	Oleic Acid	Sodium Disulphite
Ammonia (aqu. Sol)	Caustic Soda Sol. 10%	Hydrazine Hydrate	Orthophosphoric Acid 50%	Sodium Dithionite 10%
Ammonia (100% Dry Gas)	Chloral Hydrate	Hydrosulphite 10%	Oxalic Acid	Sodium Ferricyanide
Ammonium Acetate	Chloroethanol	Hydroxylamine Sulphate	Paraffin Emulsions	Sodium Ferrocyanide sat.sol
Ammonium Bifluoride	Chloric Acid 10%	Hydrazine 35%	Paraffin Oil	Sodium Fluoride sat. sol
Ammonium Carbonate 50%	Chloroacetic Acid	Hydrazine Hydrochloride	Perchloric Acid 20%	Sodium Hydroxide Conc.
Ammonium Chloride	Chlorobenzene	Hydroiodic Acid	Phosphoric Acid 50%	Sodium Hypochlorite
Ammonium Hydrogen Fluoride 50%	Chrome Alum sat.sol	Hydrobromic Acid 50%	Phosphorous Yellow	Sodium Iodide
Ammonium Hydroxide	Chromic Acid sat.sol	Hydrocyanic Acid sat.sol	Phosphorous Pentoxide	Sodium Nitrate
Ammonium Metaphosphate sat.so	Citric Acid 25#	Hydrochloric Acid 35%	Phthalic Acid	Sodium Oxalate
Ammonium Nitrate sat. sol	Clorox Bleach	Hydrofluoric Acid 40%	Phthalic Anhydride	Sodium Persulphate
Ammonium Persulphate sat.so	Copper Cyanide	Hydrofluorisilicic Acid	Picric Acid 1%	Sodium Phosphate
Ammonium Phosphate	Copper Nitrate	Hydrogen Bromide 10%	Potash	Sodium Silicate
Ammonium Sulphide sat.sol	Copper Sulphate	Hydrogen Peroxide 20% Sulphates 50%	Potassium/ Aluminum	Sodium Sulphate
Ammonium Thiocyanate sat.sol	Cresol 90%	Hydrogen Phosphide 100%	Potassium Bichromate	Sodium Sulphide
Amy Acetate	Cresylic Acid	Hydrogen Sulphide	Potassium Borate 10%	Sodium Sulphonates
Amyl Alcohol	Crotonic Aldehyde	Hypochlorous Acid	Potassium Bromide	Sodium Thiosulphate
Antimony Salts	Cuprous Chloride sat.sol	Iodine (Alc. Sol.) Conc	Potassium Chlorate	Starch Solution sat.sol
Antimony Trichloride 90%	Cyclohexane	Iron (II) Chloride sat.sol	Potassium Chloride	Stearic Acid
Aqueous Alkalies (NaOH)	Cyclohexanol	Iron (II) Sulphate sat. sol	Potassium Chromate	Succinic Acid
Arsenic Acid	Dextrin sat.so	Iron (III) Chloride sat.sol	Potassium Cyanide	Sulphur
Asorbic Acid 10%	Dextrose sat.sol	Iron (III) Nitrate sat. sol	Potassium Dichromate 40%	Sulphuric Acid 50%
Barium Carbonate sat.sol	Diethylene Carbonate	Iron (III) Sulphates sat. sol	Potassium Fluoride	Tannic Acid sol
Barium Chloride	Disodium Phosphate	Isopropanol	Potassium Hydroxide	Tanning Extracts
Barium Cyanide	Diethylene Glycol	Isopropyl Acetate	Potassium Iodide	Tartaric Acid sat.sol
Barium Hydroxide sat.sol	Diglycolic Acid 30%	Isopropyl Alcohol	Potassium Nitrate sat. sol	Tetraethyl Lead
Barium Nitrate	Dioxane	Lactic Acid (All Conc)	Potassium Perborate sat.sol	Tributylprophosphate
Barium Sulphate sat.sol	Electrolyte	Lead Acetate sat. sol	Potassium Perchlorate	Tricresyl Phosphate
Barium Sulphide	Ethanol	Magnesium Carbonate	Potassium Permanganate	Triethanolamine
Battery Fluid, Acid	Ethylene Chlorohydrin	Magnesium Hydroxide	Potassium Persulphate sat.sol	Trisodium Phosphate sat.sol
Benzaldehyde	Magnesium Oxide	Magnesium Nitrate	Potassium Phosphates	Urea
Benzene Ethylene Diamine	Ethylene Glycol	Potassium Sulphate	Wetting Agents	White Acid 75%
Benzoic Acid	Ferric Chloride sat.sol	Magnesium Sulphate	Propanol	Yeast sol
Benzyl Alcohol	Ferric Nitrate sat.sol	Maleic Acid	Propargyl Alcohol 7%	Zinc Bromide sat.sol
Benzyl Chloroformate	Ferric Salts	Malic Acid 1%	Propionic Acid 50%	Zinc Chloride sat.sol
Boric Acid Dilute	Ferric Sulphate sat.sol	Mercury	Propyl Alcohol	Zinc Sulphate
Boric Acid Conc	Ferrous Sulphate	Methanol	Propylene Dichloride	
Butadiene	Fluoboric Acid	Methyl Acetate	Propylene Glycol	
Butanediol		Methyl Alcohol	Propylene Oxide	

Polyethylene products are compatible for use with the substances and concentration levels shown above. This guide was compiled from various sources as an information aid only. No tests have been conducted to validate the information and we assume no responsibility of liability for the use or misuse of this information.

CHEMICAL ABSORBENT CHEMICAL SUITABILITY GUIDE

LIQUID	%	LIQUID	%	LIQUID	%	LIQUID	%
Acetic Acid	97	Carbonic Acid	Dil.	Magnesium Hydroxide	Dil.	Sodium Bisulphate	Dil.
Acetic Acid	50	Castor Oil	100	Magnesium Nitrate	Dil.	Sodium Bisulphite	Dil.
Acetic Acid	40	Catyl Alcohol	100	Magnesium Sulphate	Dil.	Sodium Borate	Dil.
Acetic Acid	10	Chromic Acid	50	Magnesium Sulphite	Dil.	Sodium Bromide Oil	Dil.
Acetone	100	Cider		Meat Juices		Sodium Carbonate	Dil.
Acetophenone	100	Citric Acid	Dil.	Mercuric Cyanide	Dil.	Sodium Chlorate	Dil.
Aluminum Chloride	Dil.	Copper Chloride		Mercurous Nitrate	Dil.	Sodium Chloride	Dil.
Aluminium Fluoride	Dil.	Copper Cyanide	Dil.	Methyl Ethyl Ketone	100	Sodium Chlorite	Dil.
Aluminium Sulphate	Dil.	Copper Nitrate	Dil.	Methyl Alcohol	100	Sodium Cyanide	Dil.
Ammonia	30	Copper Fluoride	Dil.	Milk		Sodium Dichromate	Dil.
Ammonium carbonate	Dil.	Copper Sulphate	Dil.	Mineral Oil	100	Sodium Ferricyanide	Dil.
Ammonium Chloride	Dil.	Cotton Seed Oil	Dil.	Motor Oil	100	Sodium Ferrocyanide	Dil.
Ammonium Hydroxide	Dil.	Cuprous Chloride		Nickel Chloride	Dil.	Sodium Fluoride	Dil.
Ammonium Metaphosphate	Dil.	Cyclohexanal	Dil.	Nickel Nitrate	Dil.	Sodium Hypochlorite	Dil.
Ammonium Nitrate	Dil.	Cylohexanone	100	Nickel Sulphate	Dil.	Sodium Nitrate	Dil.
Ammonium Sulphate	Dil.	Detergents	100	Nitric Acid	60	Sodium Nitrite	Dil.
Ammonium Sulphate	Dil.	Dibutyl Phthalate		Nitric Acid	10	Sodium Silicate	Dil.
Ammonium Sulphide	Dil.	Diethylene Glycol	100	Nitrobenzene	100	Sodium Sulphate	Dil.
Ammonium Thiocyanate	Dil.	Emulsifiers	100	Oleic Acid		Sodium Sulphite	Dil.
Amy Alcohol	100	Ethyl Acetate		Oliver Oil	100	Stannous Chloride	Dil.
Aniline	100	Ethyl Alcohol	100	Paraffin	100	Sulphuric Acid	60
Antimony Chloride	Dil.	Ethyl Benzene	96	Petrol	100	Sulphuric Acid	50
Aviation Fuel	100	Ethyl Ether	100	Pheno	100	Tannic Acid	Dil.
Aviation Turbine Fuel	100	Ethylene Dichloride	100	Phosphoric Acid	95	Tartaric Acid	Dil.
Barium Carbonate	Dil.	Feric Nitrate	100	Potassium Bicarbonate	Dil.	Tetrachloroethane	100
Barium Chloride	Dil.	Feric Sulphate	Dil.	Potassium Bromate	Dil.	Transformer Oil	100
Barium Hydroxide	Dil.	Feric Sulphate	Dil.	Potassium Bromide	Dil.	Trichloroacetic Acid	100
Barium Sulphate	Dil.	Fluosilicic Acid	Dil.	Potassium Carbonate	Dil.	Trichloroethane	100
Beer	100	Formaldehyde	Dil.	Potassium Chlorate	Dil.	Triethanolamine	100
Benzene	100	Formic Acid	40	Potassium Chloride	Dil.	Urea	
Benzoic Acid		Fruit Juice	100	Potassium Chromate	Dil.	Urine	
Benzyl Alcohol		Gasoline		Potassium Cyanide	Dil.	Vinegar	
Bismuth Carbonate	Dil.	Gear Box Oil	100	Potassium Dichromate	Dil.	Water	
Boric Acid	Dil.	Glucose	100	Potassium Hydroxide	Dil.	Whisky	
Brine	Dil.	Hydrobromic Acid	20	Potassium Hydroxide	Dil.	White Paraffin	
Butyl Alcohol	100	Hydrochloric Acid	Dil.	Potassium Nitrate	Dil.	White Spirit	100
Calcium Carbonate	Dil.	Hydrochloric Acid	20	Potassium Perchloride	Dil.	Wines	
Calcium Chlorate	Dil.	Hydrochloric Acid	10	Potassium Permanganate	Dil.	Xylene	100
Calcium Chloride	Dil.	Hydrogen Peroxide	30	Potassium Sulphate	Dil.	Zinc Chloride	Dil.
Calcium Hydroxide	Dil.	Inks	30	Potassium Sulphide	Dil.	Zinc Oxide	Dil.
Calcium Hyperchlorite	Dil.	Isopropyl Alcohol	100	Potassium Sulphite	Dil.	Zinc Sulphate	Dil.
Calcium Nitrate	Dil.	Lead Acetate	Dil.	Propyl Alcohol	100		
Calcium Phospate	Dil.	Linseed Oils	100	Silicone Oil	100		
Calcium Sulphate	Dil.	Lubricating Oil	100	Soap Solution			
Calcium Sulphite	Dil.	Magnesium Carbonate	Dil.	Sodium Acetate	Dil.		
Carbon Disulphide	Dil.	Magnesium Chloride	Dil.	Sodium Bicarbonate	Dil.		

This guide was compiled from various sources as an information aid only. We assumes no responsibility for the use or misuse of this information.



Inmechco Resources (M) Sdn. Bhd.

(484907-U/ 199901010007)

8, Jalan Ekoperniagaan 1/20, Taman Ekoperniagaan, 81100 Johor Bahru, Johor, Malaysia.
Tel: +607-288 3388 Fax: +607-288 3399 www.inmechco.com info@inmechco.my

